

Catalina 1,562 sq. ft.

Resort Series
Quail Creek



Exterior Design A



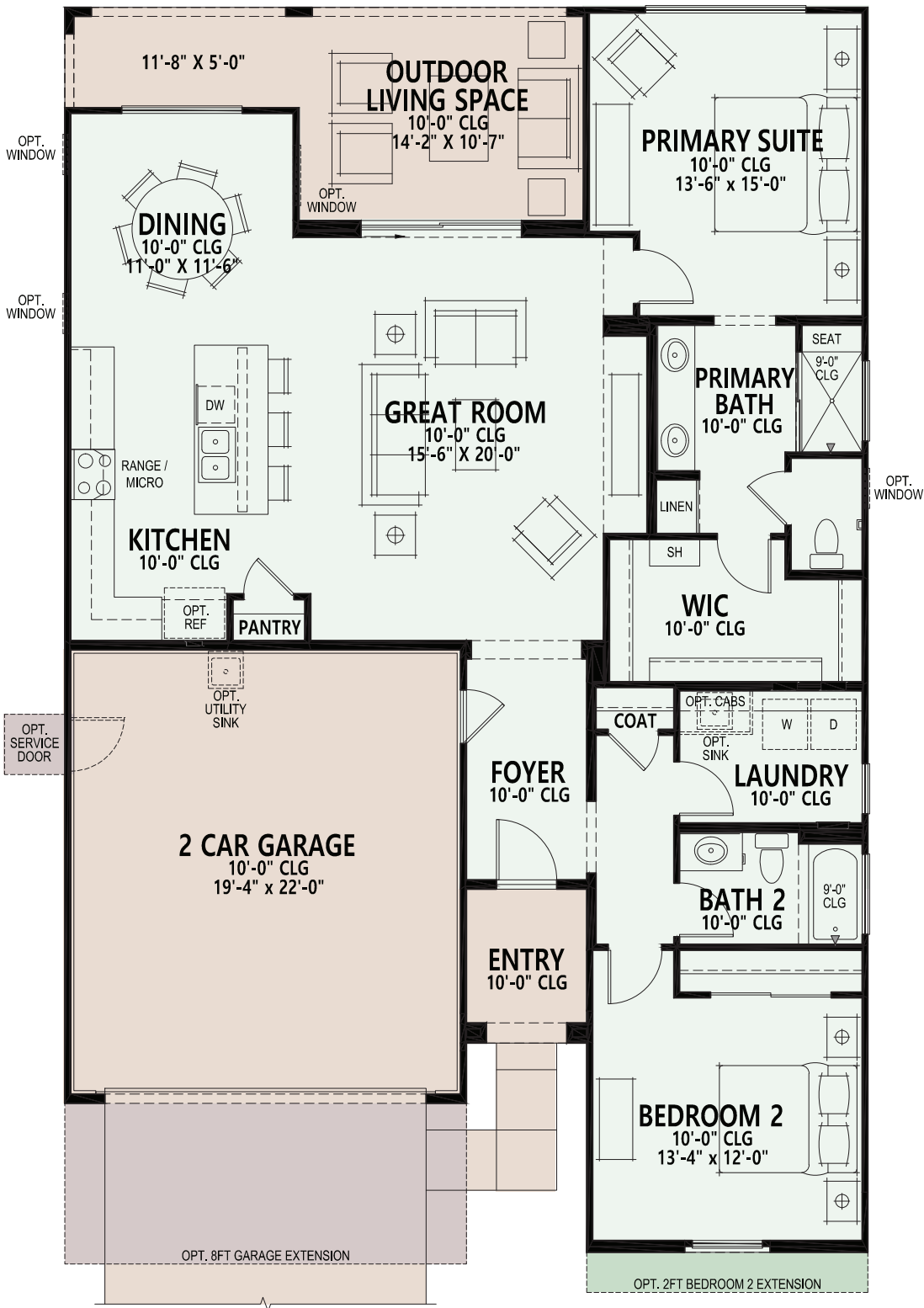
Exterior Design B



Exterior Design D

Catalina 1,562 sq. ft.

Resort Series Quail Creek



- 2 Bedrooms, 2 Baths
- Great Room
- Dining Area
- Media Alcove in Great Room
- Large Kitchen Island
- Generous Walk-in Closet in Primary Suite
- Laundry Room
- 10' Ceiling Heights
- Deep 2-Car Garage
- 207 sq. ft. of Covered Outdoor Living Space
- Opt. Den w/Powder Room and Bedroom 2 Suite
- Opt. Butler's Pantry w/Walk-in Pantry and Bar in Great Room
- Opt. 8' Garage Extension

Standard Livable Space
 Optional Livable Space
 Standard Concrete Areas
 Optional Concrete Areas

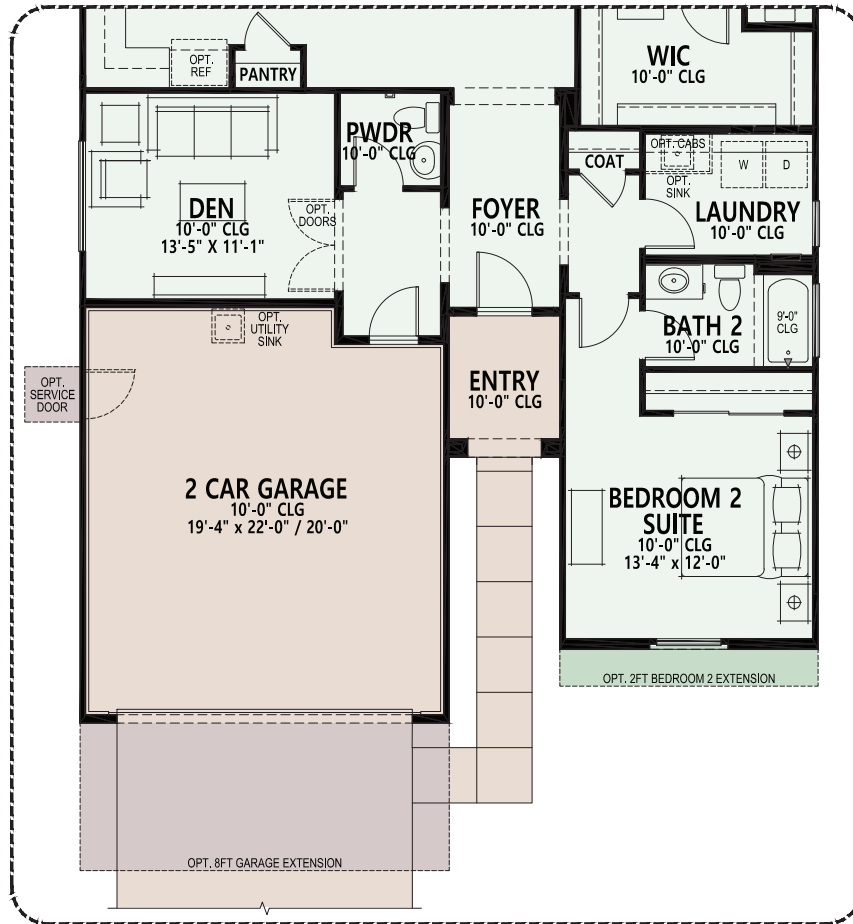
PRELIMINARY

Go to robson.com for the latest floorplan updates.

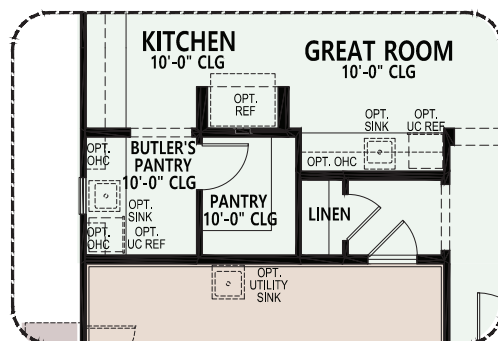
Catalina 1,562 sq. ft.

OPTIONS Quail Creek

At Quail Creek, you can personalize your home with a variety of options and features.



Opt Den w/ Powder and Bedroom 2 Suite



Opt Butler's Pantry /
Walk-in Pantry / Bar

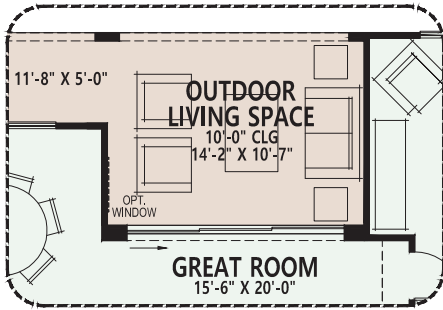
PRELIMINARY

Due to the variety of options allowing you to personalize your home, there may be some options which cannot be combined due to structural limitations. Please check with your New Home or Design Consultant.

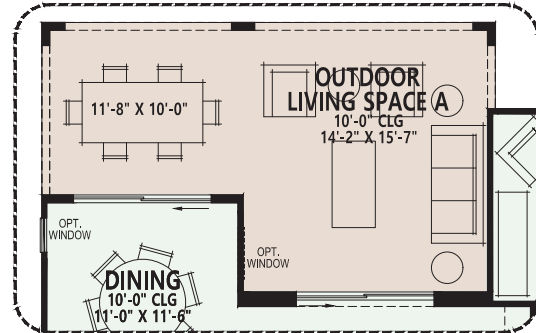
Catalina 1,562 sq. ft.

OPTIONS Quail Creek

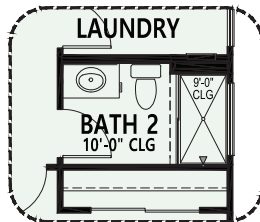
At Quail Creek, you can personalize your home with a variety of options and features.



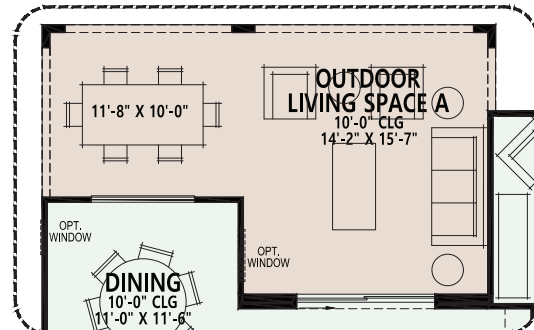
Opt 12080
Stackable SGD



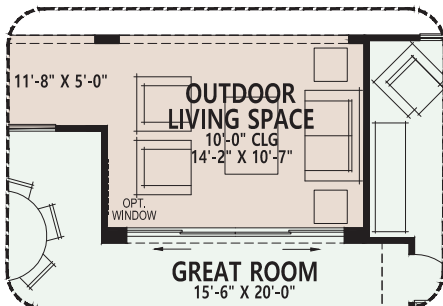
Opt 8080 SGD at Dining
(Available w/ ODLs A Only)



Opt Shower
at Bath 2



Opt Outdoor Living Space A



Opt 12080
Center-Opening SGD

PRELIMINARY

Due to the variety of options allowing you to personalize your home, there may be some options which cannot be combined due to structural limitations. Please check with your New Home or Design Consultant.

All information is subject to change without notice. We reserve the right to discontinue or change specifications at any time. Promotional materials may show features, options, upgrades or improvements that are only available at additional cost and that are not included unless specifically provided for in the purchase contract. All dimensions and measurements, including without limitation square footages, ceiling heights and window sizes, styles and locations, are approximate and may vary per elevation and floorplan. Measurements in model homes may vary slightly without incurring any obligation or liability. Actual lot sizes and home measurements will vary. Lot size and actual position of the home on the lot will be determined by the site plan and final plot plan based upon the particular home and lot selected. Interior and/or exterior photos or illustrations of models may have been taken at other Robson Resort Communities®, are artist's conceptions and are not intended to show specific detail for homes at any particular Robson Resort Community™. Many options are available and will vary per floorplan. Due to the variety of options allowing you to personalize your home, there may be some options which cannot be combined due to structural limitations. Please check with your New Home or Design Consultant. Elevation appearance will change with the addition of a guest suite, separate casita, golf cart garage, bay windows or any other applicable structural option/upgrade. Check with your New Home Consultant. The housing at any Robson Resort Community™ is intended for occupancy by at least one person 55 years of age or older per dwelling unit, although the occupants of a limited number of dwelling units may be younger. One person must be at least 40 years of age in each unit. No one in permanent residence under 19 years of age. Homes are offered and sold by Robson Ranch Quail Creek, LLC, owner/agent. Robson Ranch Arizona Construction Company, general contractor, ROC 192584. No offer for sale or lease may be made or accepted prior to buyer's receipt of an Arizona subdivision public report. A public report is available on the state real estate department's website. This material shall not constitute an offer in any state where registration is required or if in violation of law. Effective date 12/5/24. All photos/pictorials are artist's conception. © 2024 Robson Communities®, Inc. All rights reserved.