

**MOVE-IN READY HOME**

**\$815,028**

**62169 E Copper Basin Way, Oracle, AZ 85623**



**SOLSTICE - 27153-A • EST. COMPLETION: FEBRUARY 25**

 <b>2,715 sq. ft.</b>	 <b>2.5 Baths</b>	 <b>Den</b>
 <b>2 Beds</b>	 <b>3-Car</b>	

**CONSTRUCTION & UTILITIES**

**Unit Style:** Single Family Detached    **Cooling:** Refrigeration  
**Construction:** Frame/Stucco        **Heating:** Gas

**COUNTY, LOT AND HOA**

**County Code:** Pinal    **Lot Number:** 89    **Unit:** 19

**HOA Fees:** \$3,313.24 per year. Includes access to SaddleBrooke Ranch amenities including fitness facilities, pickleball courts, pools and more!

**OVERVIEW**

The home has spacious outdoor living space and is a great home for entertaining! You will appreciate the Designer touches throughout, including quartz countertops, woodcase shaker white cabinets, and a Signature Kitchen Suite Stainless Steel Gas Appliance Package in the Kitchen. There is also an angled bay window at the Primary Bedroom. A limited 9-year construction warranty is included.

SaddleBrooke Ranch is located in the north Tucson area of Arizona surrounded by grand mountain vistas and stunning Sonoran desert terrain. World class amenities include: Gated entry, championship golf, Ranch House Grill & Brewery, creative arts center, resort-style outdoor pool, indoor pool, fitness center, tennis courts, 24 pickleball courts, ballroom/auditorium, dog park, community garden and more.

**HOME UPGRADES & FEATURES**

**Kitchen:**

Woodcase - Shaker White Cabinets w/42" Uppers  
Crown Moulding  
Quartz Countertops  
Full Height Backsplash  
Blanco Granite Undermount Sink - White  
Delta Pull-Down Faucet - Lumicoat Arctic Stainless  
Signature Kitchen Suite Stainless Steel Gas Appliance  
Package includes: Wall Oven w/Speed Cook & Steam,  
Dishwasher and Cooktop

**Bathrooms:**

Upgraded Delta Plumbing Fixtures in Stainless  
Coordinating Delta Bath Accessories in Stainless  
Quartz Vanities and Tile Surrounds in Primary Bath  
and Bath 2  
Heavy Glass Semi-Frameless Shower Enclosure  
Soft Close Toilet Seat in all Baths

**Outdoor Living:**

BBQ Gas Stub at Patio  
Seamless Rain Gutters at Whole House

**Additional Upgrades:**

4' Extension at 3-Car Garage  
Angled Bay Window at Primary Bedroom  
Upgraded Glass Panel to Upper Cabinets at Dining Niche  
Quartz Countertop at Laundry Room  
Sterling Latitude Vikrell Laundry Sink - White  
Two Tone Paint for Interior Walls & Trim  
Butler's Pantry w/undermount Bar Sink and  
42" Upper Cabinets  
Coffer Ceiling at Great Room and Kitchen  
Upgraded Carpet and Wood/Laminate Flooring  
Zephyr Beverage Center w/Glass Door at Great Room Bar

Home Base Price:	\$668,900
Upgrades/Options:	\$161,128
Premium Lot	\$ 15,000
<b>PRICE</b>	<b>\$815,028</b>

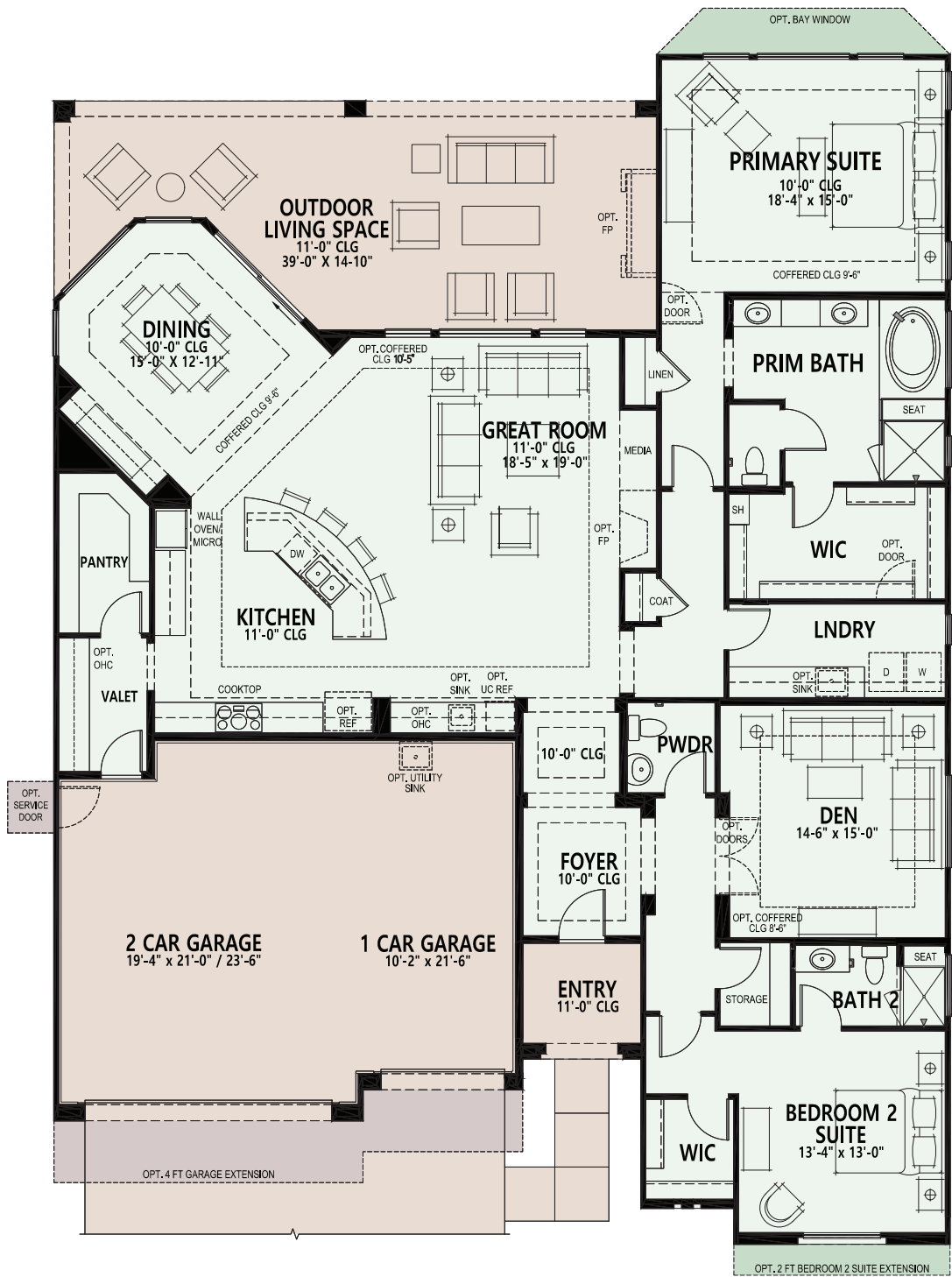


59680 East Robson Circle, Oracle, AZ 85623  
Model Village Open Daily 9am - 6pm

CALL FOR INFORMATION  
520.818.6000  
866.818.6068

All information is subject to change without notice. We reserve the right to discontinue or change specifications at any time. Promotional materials may show features, options, upgrades or improvements that are only available at an additional cost and that are not included unless specifically provided for in the purchase contract. All dimensions and measurements, including without limitation square footages, ceiling heights and window sizes, styles and locations, are approximate and may vary per elevation and floor plan. Measurements in model homes may vary slightly without incurring any obligation or liability. Lot size is approximate and is typical for that home series within the community. Actual lot sizes and home measurements will vary. Lot size and actual position of the home on the lot will be determined by the site plan and final plot plan based upon the particular home and lot selected. Interior and/or exterior photos or illustrations of models may have been taken at other Robson Resort Communities®, are artist's conceptions and are not intended to show specific detail for homes at any particular Robson Resort Community™. Many options are available and will vary per floor plan. Check with your New Home Consultant. The housing at any Robson Resort Community™ is intended for occupancy by at least one person 55 years of age or older per dwelling unit, although the occupants of a limited number of dwelling units may be younger. One person must be at least 40 years old in each unit. No one in permanent residence under 19 years of age. Homes are offered and sold by SaddleBrooke Development Company, broker for Robson Ranch Mountains, LLC, owner. Robson Ranch Arizona Construction Company, general contractor, ROC 192584. No offer for sale or lease may be made or accepted prior to buyer's receipt of an Arizona subdivision public report. A public report is available on the Arizona state real estate department's website. There are additional fees (not included in the HOA fees) for using some of the recreational facilities. The golf course, pro shop and practice facility are open to the public and will be owned by the developer or its assignee(s). Availability of these facilities for use by owners of interests in the development is at the pleasure of the owners of the facilities. The Ranch House Grill is currently open to the public. All photos/pictorials are artist's conception. Information is subject to change without notice. This shall not constitute an offer in any state where registration is required or if in violation of law. Effective date 12/17/24. © 2024 Robson Communities®, Inc. All rights reserved.





- Standard Livable Space
- Optional Livable Space
- Standard Concrete Areas
- Optional Concrete Areas

