








ENCHANTMENT • UNIT: 20E/LOT: 66 • EST. COMPLETION: FEBRUARY 2026

 2,459 sq. ft.

 2 Beds

 3.5 Baths

 Den

 2-Car

SALE PRICE  
\$498,900

CONSTRUCTION & UTILITIES  
Unit Style: One Level  
Cooling: Refrigeration  
Heating: Gas  
Construction: Frame/stucco

HOME UPGRADES & FEATURES

**Kitchen:**  
Shaker-Alder, Taupe, Cabinets with 41" Uppers - Arctic White  
Granite / Quartz Countertops  
Full Height Tile Backsplash  
Kohler Vault - Single Bowl undermount sink w/rack  
Delta Emmeline Pull-Down Faucet  
LG Stainless Steel Gas Appliance Package Includes Cooktop, Dishwasher, Wall Oven and Microwave

**Bathrooms:**  
Quartz / Quartz Counter Tops at Primary Bath and Bath 2  
Standard Title Surround at Primary Bath  
Delta Altado Fixtures - Chrome  
ProFlo High-efficiency Comfort  
3/8" Clear Glass Semi-Frameless Shower Enclosure

**Outdoor Living:**  
Large Covered outdoor Living Space - 264 sq ft

**Additional Upgrades:**  
Designer Carpet and Tile  
Two-Tone Interior Paint  
Granite/Quartz at Standard Laundry  
Kohler Undertone Laundry sink  
Delta Trinsic pull down faucet at Laundry  
5-1/4 Baseboards

**HOA Fees:** \$3,473.12 per year. Includes access to Robson Ranch amenities including fitness facilities, resort pools, creative arts, tennis courts and more!





**Robson Ranch**  
A ROBSON RESORT  
COMMUNITY™

5687 N. Robson Blvd. Eloy, AZ 85131  
Model Village Open Daily 9am - 6pm

CALL FOR INFORMATION  
520.426.3300  
800.770.7044

All information is subject to change without notice. We reserve the right to discontinue or change specifications at any time. Promotional materials may show features, options, upgrades or improvements that are only available at an additional cost and that are not included unless specifically provided for in the purchase contract. All dimensions and measurements, including without limitation square footages, ceiling heights and window sizes, styles and locations, are approximate and may vary per elevation and floor plan. Measurements in model homes may vary slightly without incurring any obligation or liability. Interior and/or exterior photos or illustrations of models may have been taken at other Robson Resort Communities®, are artist's conceptions and are not intended to show specific detail for homes at any particular Robson Resort Community™. Many options are available and will vary per floor plan. Check with your New Home Consultant. The housing at any Robson Resort Community is intended for occupancy by at least one person 55 years of age or older per unit, although the occupants of a limited number of the dwelling units may be younger. One person must be at least 40 years old in each unit. No one in permanent residence under 19 years of age. Homes are offered and sold by Sun Lakes-Casa Grande Development, LLC, owner/agent. Robson Ranch Arizona Construction Company, general contractor, ROC 192584. Some amenities not included in community service fees. All photos/pictorials are artist's conception. No offer for sale or lease may be made or accepted prior to buyer's receipt of an Arizona subdivision public report. A public report is available on the Arizona state real estate department's website. There are additional fees (not included in the HOA fees) for using some of the recreational facilities. All photos/pictorials are artist's conception. This material shall not constitute an offer in any state where registration is required or if in violation of law. Effective date 12/8/25. © 2025 Robson Communities®, Inc. All rights reserved.

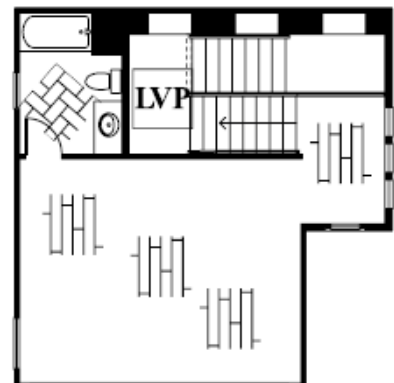
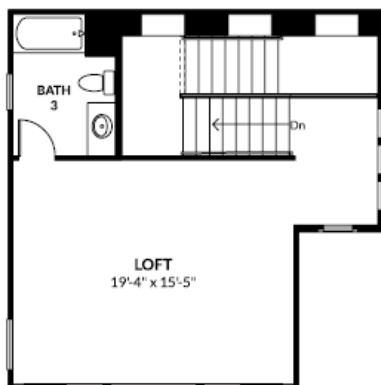
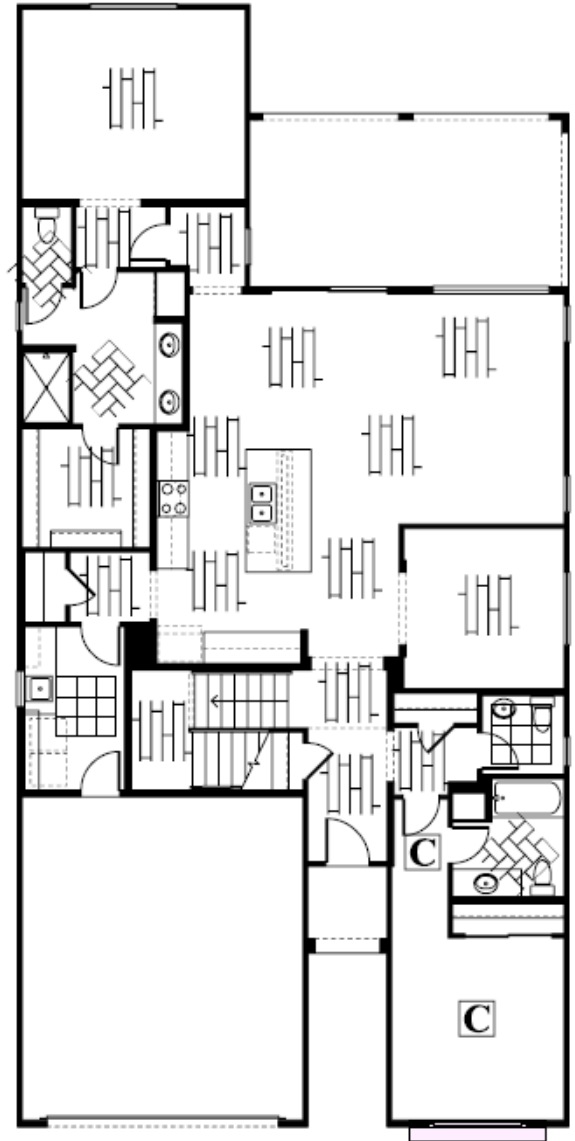
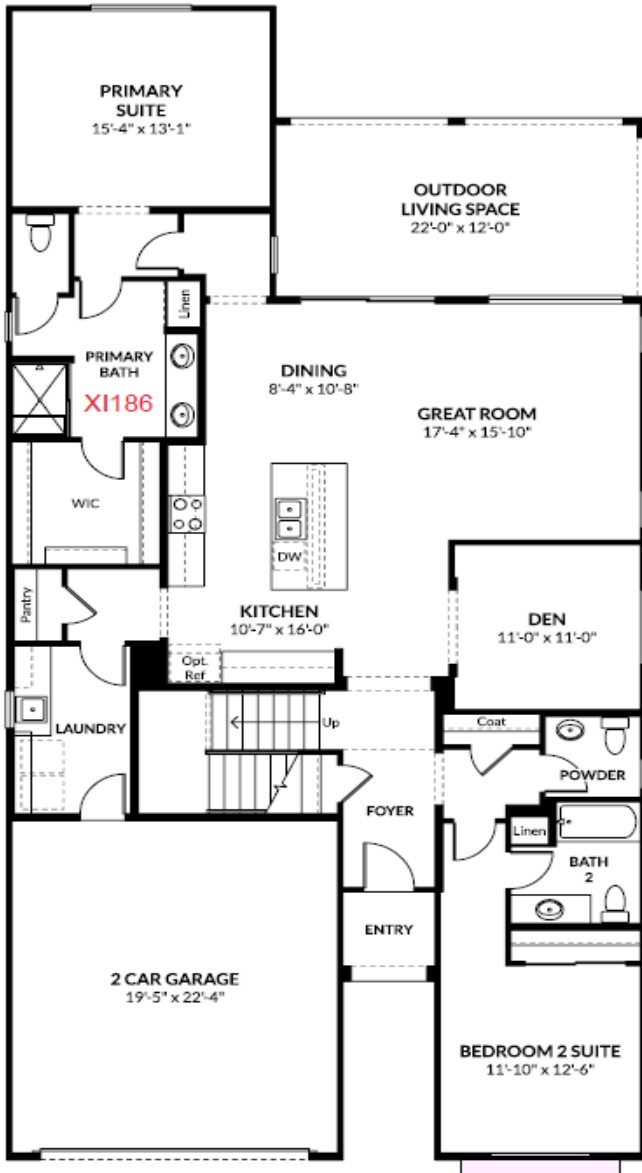




# Robson Ranch Arizona Designer Home

Plan: 2459 Enchantment

Lot: 66 Unit 20E



# Luxury Vinyl Plank, Carpet, Paint, Door Hardware

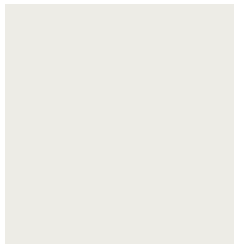


LVP:  
Shaw Vantage Point NB  
#5179 Journal



Carpet:  
Shaw Tuftex – Relaxed Essence  
Color: #00108 Marble

Paint (Trim & Doors):  
SW7005 Pure White



Entry Door:  
*ThermaTru Fiber-Classic Oak*  
*FC862-8'*  
*\*Painted per Exterior Color Scheme*

Entry Door Hardware: Schlage  
Century– Matte Black



Interior Door:  
*8' Interior 6 panel*  
*Rockport*  
*\* Painted to Match Trim*



Interior Door Hardware:  
Schlage Latitude – Bright Chrome





# Kitchen

Cabinets: Shaker 2 Taupe

Hardware:  
PROPR14-PC Polished Chrome

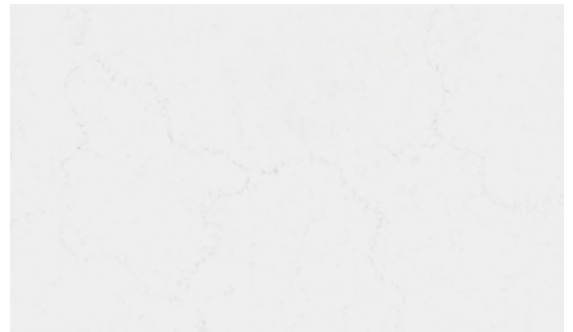
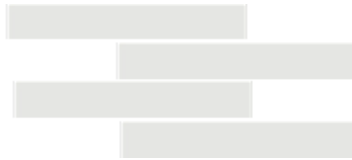
Countertop:  
AZT Portofino Classico Polished  
3 CM Eased & Polished Edge

Backsplash:  
AZT S-Vintage Grey Glossy 2x12  
\*Installed Horizontally 50/50 offset

Sink:  
Kohler Vault Single Bowl - Stainless

Faucet:  
Delta Trinsic – Chrome

Floor LVP:  
Shaw Vantage Point NB #5179 Journal



# Powder Room

## Sink:

Sterling Pedestal Sink

## Faucet:

Delta Altado 8" Widespread – Chrome

## Mirror:

3/8" Metal Silver OEM2S-24"X42"

## Vanity Light:

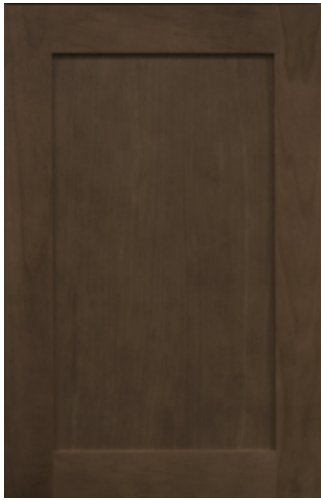
Premier Virtual Comfort  
Keaton Two Light Wall Sconce - Chrome

## Floor Tile:

AZT Cementine Evo 3 8"x8"



# Primary Bath



Cabinets:  
Shaker 2 Taupe

Cabinet Hardware:  
PROPR14-PC Polished Chrome

Mirror:  
3/8" Metal Silver OEM2S-36"X42" QTY 2

Vanity Light: Premier Virtual Comfort Keaton  
Two Light Wall Sconce - Chrome QTY 2

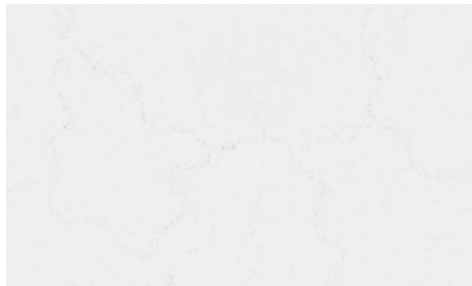
Countertop:  
AZT Portofino Classico Polished  
3 CM Eased & Polished

Faucet:  
Delta Altado 8" Widespread – Chrome

Shower Wall Surround & Seat:  
AZT Themar Bianco Lasa Matte 12x24  
\*Installed Horizontally & Stacked

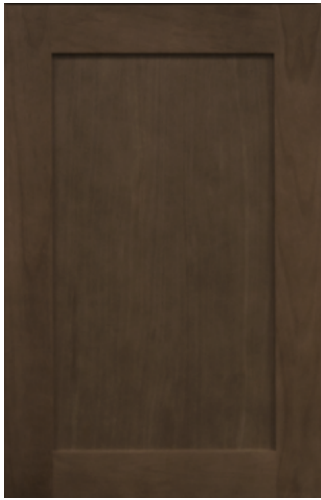
Shower Floor:  
AZT Themar Bianco Lasa Matte 2x2

Floor:  
AZT Themar Bianco Lasa Matte 3x12  
\*Installed in herringbone pattern



\*Image for pattern only\*

## Bath 2



### Cabinets:

Shaker 2 Taupe

### Cabinet Hardware:

PROPR14-PC Polished Chrome

### Mirror:

3/8" Metal Silver OEM2S-36"X42"

Vanity Light: Premier Virtual Comfort  
Keaton Two Light Wall Sconce - Chrome

### Countertop:

AZT Portofino Classico Polished  
3 CM Eased & Polished

### Faucet:

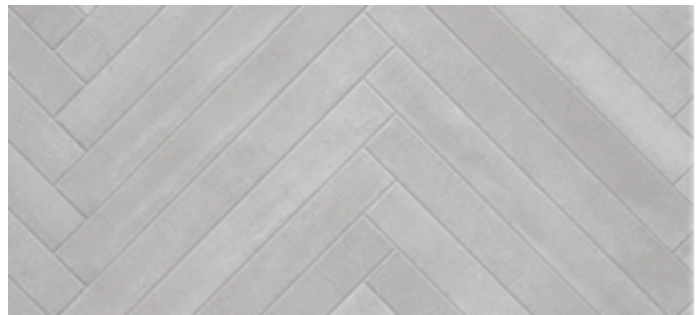
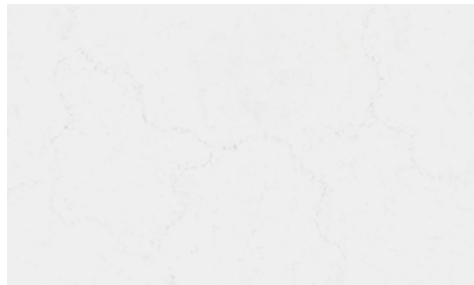
Delta Altado 8" Widespread Chrome

### Tub/Shower Surround:

AZT Flash White 5x5  
\*Installed Stacked

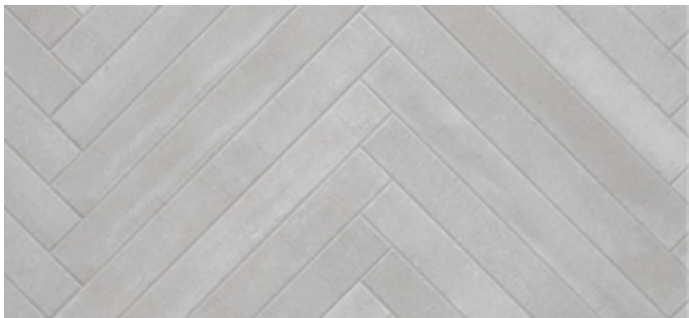
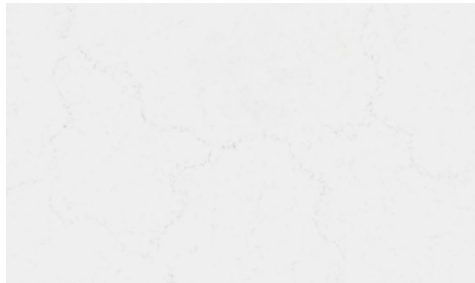
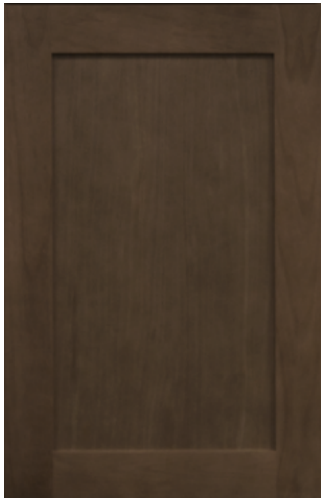
### Floor:

Bedrosians Celine Taupe Matte 2.5 x 12  
\*Installed Herringbone





## Bath 3



### Cabinets:

Shaker 2 Taupe

### Cabinet Hardware:

PROPR14-PC Polished Chrome

### Mirror:

3/8" Metal Silver OEM2S-36"X42"

### Vanity Light:

Premier Virtual Comfort  
Keaton Two Light Wall Sconce - Chrome

### Countertop:

AZT Portofino Classico Polished  
3 CM Eased & Polished

### Faucet:

Delta Altado 8" Widespread Chrome

### Tub/Shower Surround:

Included Sterling Medley Ensemble Unit

### Floor:

Bedrosians Celine Taupe Matte 2.5 x 12  
\*Installed Herringbone



Builder reserves the right to alter any products or design without prior notice. Product substitutions will be made, as needed, to meet construction schedules.  
Photos are intended to be inspiration photos and are not intended to be exact depictions of color, floorplans, or selections.

# Laundry

## Cabinets:

Shaker 2 Taupe

## Cabinet Hardware:

PROPR14-PC Polished Chrome

## Countertop:

AZT Linen-N

3 CM Eased & Polished

Sink: Kohler Undertone Stainless Steel

## Faucet:

Delta Trinsic-Chrome

## Floor:

AZT Reverie Decor 11

