






MOVE-IN READY HOME

\$563,971

4231 W Ruby Ct, Eloy, AZ 85131



FRESCO 20093-A • UNIT: 25A/LOT: 66 • EST. COMPLETION JUNE 2025

-  2,009 sq. ft.
-  2 Beds
-  2.5 Baths
-  Den
-  2-Car + Golf Cart

Home Base Price	\$439,900
Premium Lot	\$ 12,000
Upgrades/Options	\$142,071
PRICE	\$563,971

CONSTRUCTION & UTILITIES

- Unit Style:** One Level
- Cooling:** Refrigeration
- Heating:** Gas
- Construction:** Frame/stucco

HOME UPGRADES & FEATURES

Kitchen:

- Woodcase White & Mesquite Cabinets
- Quartz Countertops
- Full Height Tile Backsplash
- Dining Room Bar
- McAllister Undermount Sink -Stainless Steel
- Delta Emmeline - Pull-Down Faucet, Matte Black
- LG Stainless Steel Gas Appliance Package Includes Cooktop, Dishwasher, Wall Oven and Microwave
- French Door Refrigerator

Bathrooms:

- Quartz Counter Tops at Master Bath and Bath 2
- Ceramic Title Surround at Master Bath
- Delta Ashlyn Bath Fixtures - Matte Black
- ProFlo High-efficiency Comfort
- Heavy Clear Glass Shower Enclosure at Master Bath

Outdoor Living:

350 sq ft of Outdoor Living

Additional Upgrades:

- Golf Cart Garage, Expanded Laundry Room
- Designer Tile & Carpet
- Bar & Butler's Pantry
- 2' Extension at Bedroom 2 suite
- Two-Tone Interior Paint
- Tankless Water Heater
- LG Washer-Dryer
- 5-1/4 Baseboard

HOA Fees: \$3,339.44 per year. Includes access to Robson Ranch amenities including fitness facilities, resort pools, creative arts, tennis courts and more!

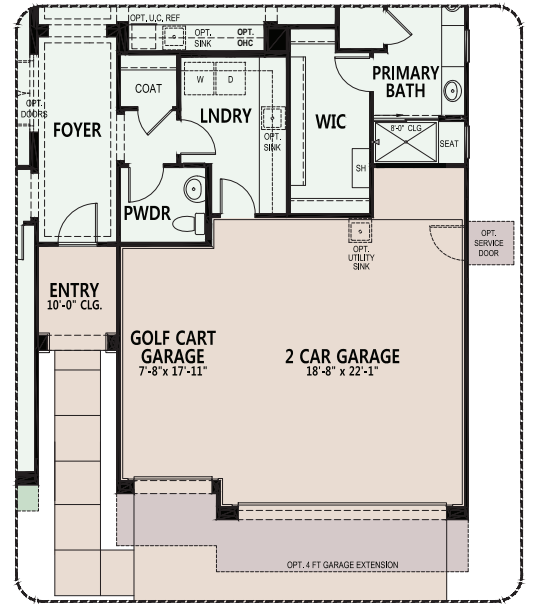
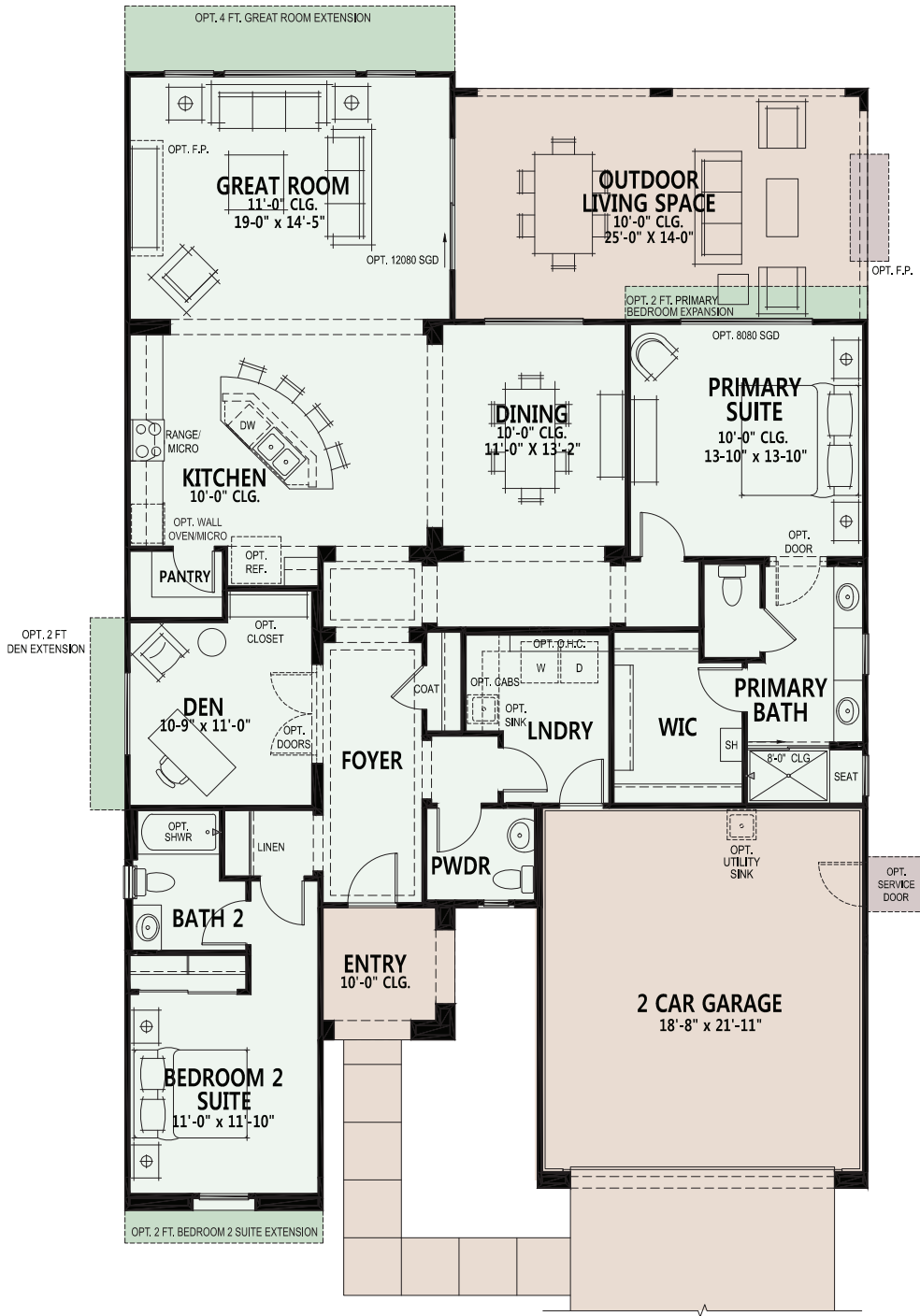


5687 N. Robson Blvd. Eloy, AZ 85131
Model Village Open Daily 9am - 6pm

CALL FOR INFORMATION
520.426.3300
800.770.7044

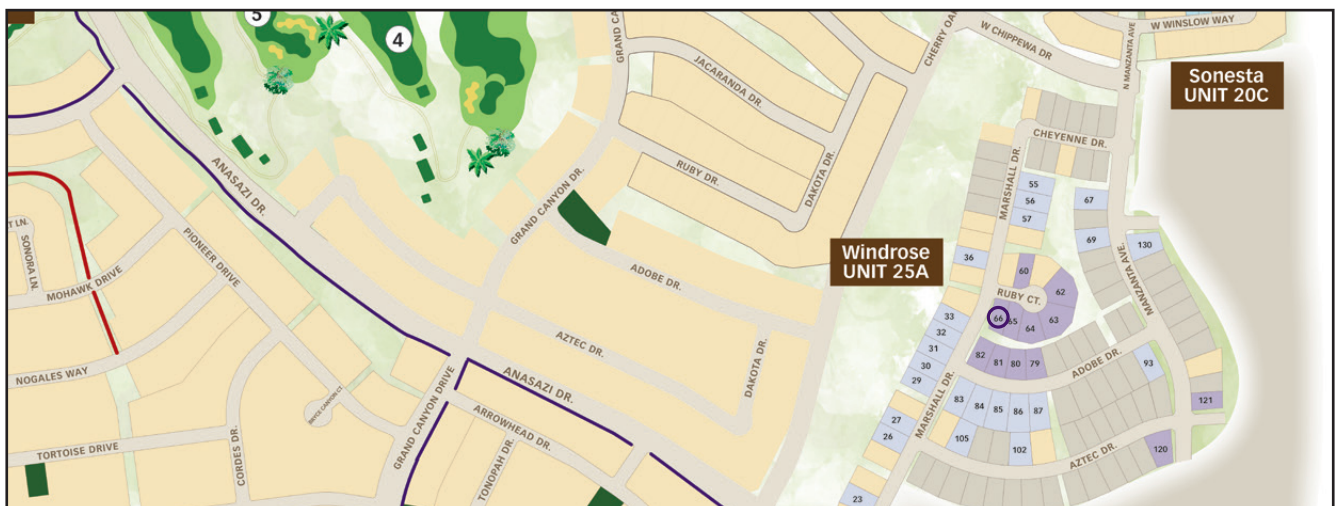
Information is subject to change without notice. We reserve the right to discontinue or change specifications at any time. Promotional materials may show features, options, upgrades or improvements that are only available at an additional cost and that are not included unless specifically provided for in the purchase contract. All dimensions and measurements, including without limitation square footages, ceiling heights and window sizes, styles and locations, are approximate and may vary per elevation and floor plan. Measurements in model homes may vary slightly without incurring any obligation or liability. Interior and/or exterior photos or illustrations of models may have been taken at other Robson Resort Communities®, are artist's conceptions and are not intended to show specific detail for homes at any particular Robson Resort Community™. Many options are available and will vary per floor plan. Check with your New Home Consultant. The housing at any Robson Resort Community is intended for occupancy by at least one person 55 years of age or older per unit, although the occupants of a limited number of the dwelling units may be younger. One person must be at least 40 years old in each unit. No one in permanent residence under 19 years of age. Homes are offered and sold by Sun Lakes-Casa Grande Development, LLC, owner/agent. Robson Ranch Arizona Construction Company, general contractor, ROC 192584. Some amenities not included in community service fees. All photos/pictorials are artist's conception. No offer for sale or lease may be made or accepted prior to buyer's receipt of an Arizona subdivision public report. A public report is available on the Arizona state real estate department's website. There are additional fees (not included in the HOA fees) for using some of the recreational facilities. All photos/pictorials are artist's conception. This material shall not constitute an offer in any state where registration is required or if in violation of law. Effective date 4/1/25. © 2025 Robson Communities®, Inc. All rights reserved.





Opt. Golf Cart Garage w/ Bar at Dining / Expanded Laundry / Reconfigured WIC

- Standard Livable Space
- Standard Concrete Areas
- Optional Livable Space
- Optional Concrete Areas



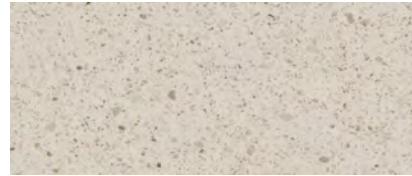


DINING ROOM BAR
BACKSPLASH

KITCHEN SINK

KITCHEN
FAUCET

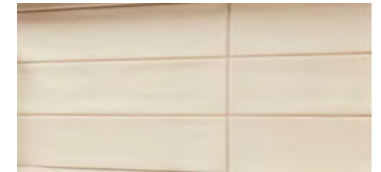
*IMAGE FOR COLOR
ONLY
STYLE WILL VARY



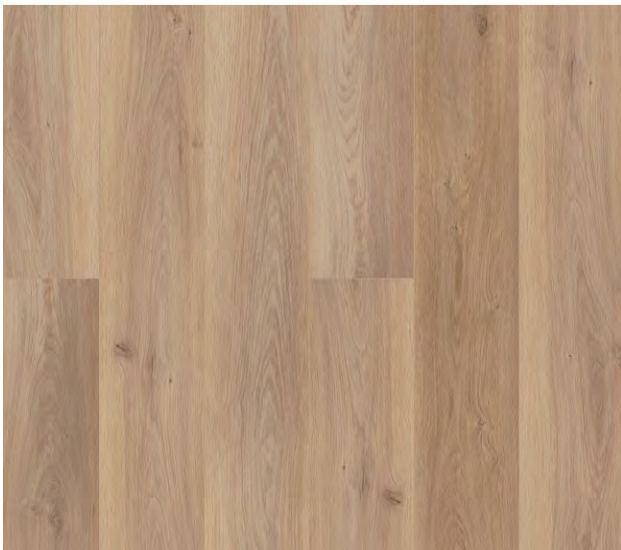
KITCHEN, BAR, LAUNDRY ROOM,
PRIMARY BATH AND BATH 2
QUARTZ COUNTERTOP COLOR



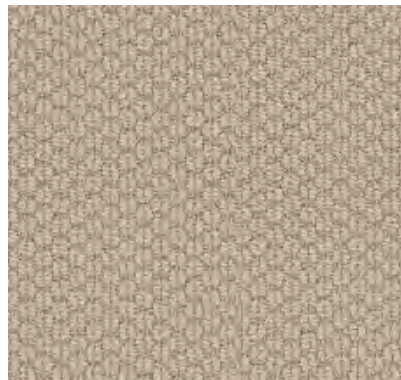
CABINET HARDWARE



KITCHEN BACKSPLASH



LUXURY VINYL PLANK FLOORING

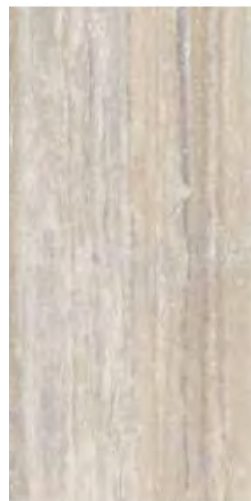


CARPET



BATH FAUCETS

*Colors may vary due
to printing*



PRIMARY BATH
SHOWER