

DESIGNER HOME

\$849,559

165780 W Whitton Ave, Goodyear AZ 85395



Rendering

MIRA 22713-E • UNIT: 47B/LOT: 3 • EST. COMPLETION: SEPTEMBER 2025



2,271 sq. ft.



2 Beds



2.5 Baths



Den



2-Car + Golf Cart

Home Base Price \$704,900

Premium Lot \$ 78,000

Upgrades/Options \$ 66,659

**PRICE \$849,559\*****CONSTRUCTION & UTILITIES****Unit Style:** One Level**Cooling:** Refrigeration**Heating:** Gas**Construction:** Modified BASF  
HP+ Wall System**PERSONALIZE YOUR DESIGNER HOME: FINISH YOUR HOME, YOUR WAY!**

Make your home uniquely yours by selecting final touches that reflect your style. Choose from a curated selection of stylish, included options at no extra cost, or explore premium upgrades for an additional price. **The finishing touch is all yours!**

**Design Selections:**

- Countertops, tile flooring, carpet, and entry door hardware — available in stylish choices, all included in the base price. Want more options? Explore upgrades for even greater personalization.
- Pre-selected faucets and sinks, bath accessories, and bath surrounds are included. Prefer a different look? Optional upgrades are available.

Connect with your new home sales consultant for further details!

**Home Upgrades:**

- LG built-in gas stainless steel appliance package
- 4' extension at Primary Suite
- 4' extension to 2-car garage & golf cart garage
- Curbless shower at Primary Bath

**Enhance Your Home Even Further With These Optional Upgrades:**

- Refrigerator
- Washer/Dryer
- Cabinet hardware
- Garage epoxy
- Upgraded shower enclosure
- Assist bars
- Framed mirrors
- Garage cabinets

*\*Price includes pre-selected options and your choices from the base-level selections.*

**HOA Fees:** \$3,268 per year. Includes access to PebbleCreek amenities including fitness facilities, pools, creative arts building, tennis courts and more!



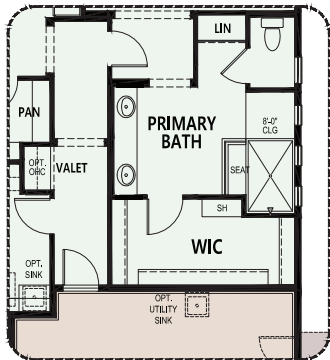
**PebbleCreek™**  
A ROBSON RESORT  
COMMUNITY™

3003 N 164th Ave, Goodyear AZ 85395  
Model Village Open Daily 9am - 6pm

CALL FOR INFORMATION  
623.935.6700  
800.795.4663

All information is subject to change without notice. We reserve the right to discontinue or change specifications at any time. Promotional materials may show features, options, upgrades or improvements that are only available at an additional cost and that are not included unless specifically provided for in the purchase contract. All dimensions and measurements, including without limitation square footages, ceiling heights and window sizes, styles and locations, are approximate and may vary per elevation and floor plan. Measurements in model homes may vary slightly without incurring any obligation or liability. Lot size is approximate and is typical for that home series within the community. Actual lot sizes and home measurements will vary. Lot size and actual position of the home on the lot will be determined by the site plan and final plot plan based upon the particular home and lot selected. Interior and/or exterior photos or illustrations of models may have been taken at other Robson Resort Communities®, are artist's conceptions and are not intended to show specific detail for homes at any particular Robson Resort Community™. Many options are available and will vary per floor plan. Check with your New Home Consultant. The housing at any Robson Resort Community™ is intended for occupancy by at least one person 55 years of age or older per dwelling unit, although the occupants of a limited number of dwelling units may be younger. One person must be at least 40 years of age in each unit. No one in permanent residence under 19 years of age. Homes are offered and sold by PebbleCreek Properties Limited Partnership, owner/agent. PebbleCreek Construction Company, general contractor, ROC 190149. No offer for sale or lease may be made or accepted prior to buyer's receipt of an Arizona subdivision public report. A public report is available on the Arizona state real estate department's website. There are additional fees (not included in the HOA fees) for using some of the recreational facilities. All photos/pictorials are artist's conception. This material shall not constitute an offer in any state where registration is required or if in violation of law. Effective date 5/20/25. © 2025 Robson Communities®, Inc. All rights reserved.





- Standard Livable Space
- Optional Livable Space
- Standard Concrete Areas
- Optional Concrete Areas





**PebbleCreek™**  
A ROBSON RESORT  
COMMUNITY™

*Designer Home*

*Mira -22713 Unit: 47B Lot: 3*



*Newport Shaker  
Cabinet Style in  
Dove White Color*

SW 7570  
Egret White

SW 7005  
Pure White

*Interior Paint Egret  
White SW7570, with  
Pure White SW7005  
Trim/Doors/Ceilings*



*Rockport 8'  
Interior 6-  
Panel Doors*

*\*Painted to Match Trim*



*5-Lite Belleville  
Entry Door*

*with Chord glass*

*\*Painted Deepest Mauve  
SW70005 per Exterior Color  
Scheme*

*LG Built-in Gas Appliance Package with Zephyr Hood - AA261+AA821*



*Under-Cabinet Hood  
AK1236CS*



*36" Gas Cooktop  
CBGJ3627S*



*Microwave Oven & Trim Kit  
MSER2090S/MK2030NST*



*Single Convection Wall Oven  
WSEP4723F*



*Top Control Dishwasher  
LDTH5554S*

*Colors may vary from shown. Subject to change.*