

DESIGNER HOME






\$594,359

62084 E Copper Basin Way, Oracle, AZ 85623



Rendering

ALORA 19563-A • UNIT: 19/LOT: 69 • EST. COMPLETION: OCTOBER 2025

	2,052 sq. ft.		2 Beds
	2.5 Baths		Den
	2-Car + Golf Cart		

Home Base Price	\$495,900
Premium Lot	\$ 25,000
Upgrades/Options	\$ 73,459
PRICE	\$594,359*

CONSTRUCTION & UTILITIES**Unit Style:** One Level**Cooling:** Refrigeration**Heating:** Gas**Construction:** Frame/stucco**PERSONALIZE YOUR DESIGNER HOME: FINISH YOUR HOME, YOUR WAY!**

Make your home uniquely yours by selecting final touches that reflect your style. Choose from a curated selection of stylish, included options at no extra cost, or explore premium upgrades for an additional price. **The finishing touch is all yours!**

Design Selections:

- Countertops, tile flooring, carpet, and entry door hardware — available in stylish choices, all included in the base price. Want more options? Explore upgrades for even greater personalization.
- Pre-selected faucets and sinks, bath accessories, and bath surrounds are included. Prefer a different look? Optional upgrades are available.

Connect with your new home sales consultant for further details!

Home Upgrades:

- 4' extension at 2-car garage and golf cart space
- 3' extension at Primary bath, walk-in closet and Den
- BBQ Gas stub

Enhance Your Home Even Further With These Optional Upgrades:

- Refrigerator
- Washer/Dryer
- Cabinet hardware
- Garage epoxy
- Upgraded shower enclosure
- Assist bars
- Framed mirrors
- Garage cabinets

**Price includes pre-selected options and your choices from the base-level selections.*

HOA Fees: \$3,313.24 per year. Includes access to SaddleBrooke Ranch amenities including fitness facilities, pickleball courts, pools and more!

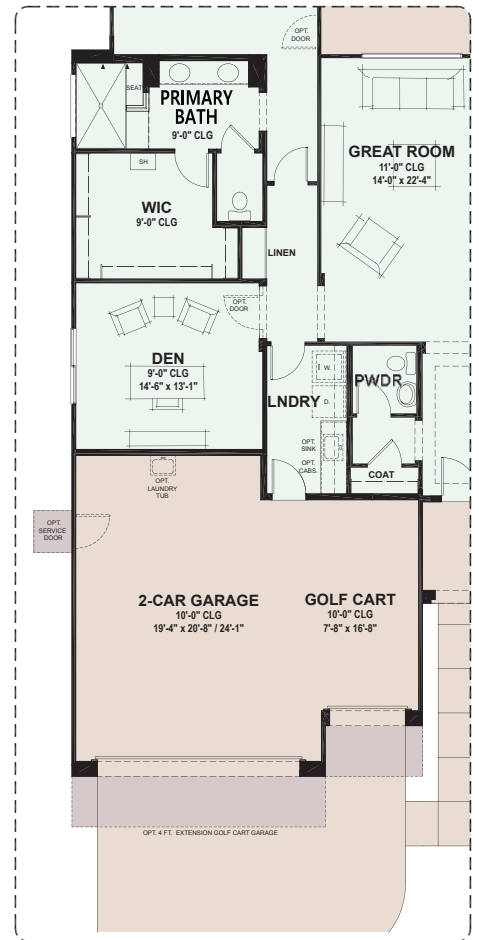
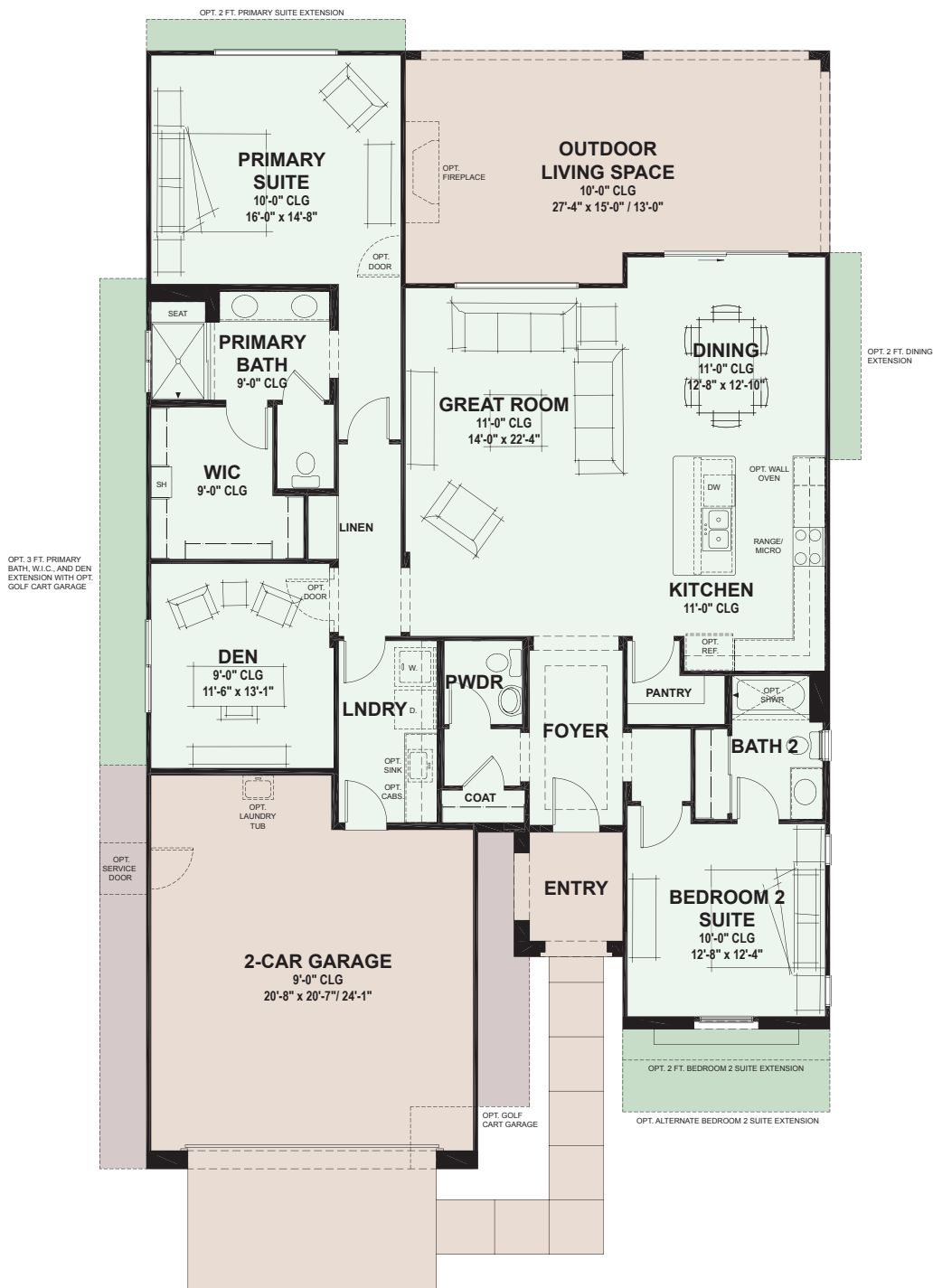


59680 East Robson Circle, Oracle, AZ 85623
Model Village Open Daily 9am - 6pm

CALL FOR INFORMATION
520.818.6000
866.818.6068

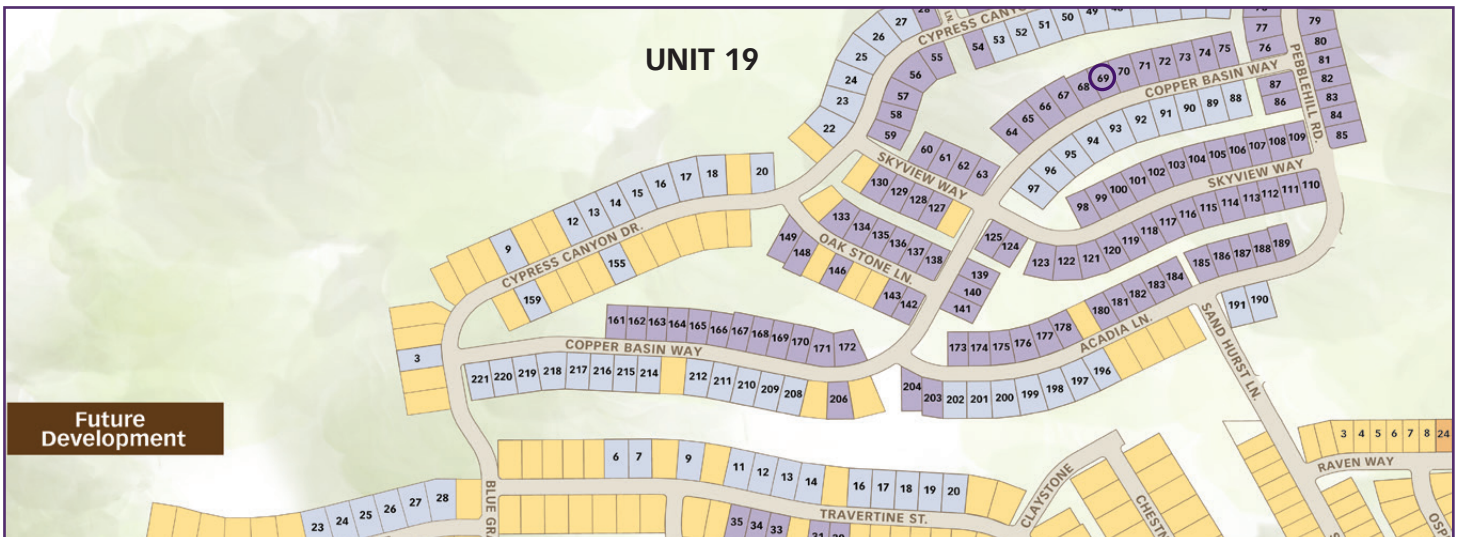
We reserve the right to discontinue or change specifications at any time. Promotional materials may show features, options, upgrades or improvements that are only available at an additional cost and that are not included unless specifically provided for in the purchase contract. All dimensions and measurements, including without limitation square footages, ceiling heights and window sizes, styles and locations, are approximate and may vary per elevation and floor plan. Measurements in model homes may vary slightly without incurring any obligation or liability. Lot size is approximate and is typical for that home series within the community. Actual lot sizes and home measurements will vary. Lot size and actual position of the home on the lot will be determined by the site plan and final plot plan based upon the particular home and lot selected. Interior and/or exterior photos or illustrations of models may have been taken at other Robson Resort Communities®, are artist's conceptions and are not intended to show specific detail for homes at any particular Robson Resort Community™. Many options are available and will vary per floor plan. Check with your New Home Consultant. The housing at any Robson Resort Community™ is intended for occupancy by at least one person 55 years of age or older per dwelling unit, although the occupants of a limited number of dwelling units may be younger. One person must be at least 40 years old in each unit. No one in permanent residence under 19 years of age. Homes are offered and sold by SaddleBrooke Development Company, broker for Robson Ranch Mountains, LLC, owner. Robson Ranch Arizona Construction Company, general contractor, ROC 192584. No offer for sale or lease may be made or accepted prior to buyer's receipt of an Arizona subdivision public report. A public report is available on the Arizona state real estate department's website. There are additional fees (not included in the HOA fees) for using some of the recreational facilities. The golf course, pro shop and practice facility are open to the public and will be owned by the developer or its assignee(s). Availability of these facilities for use by owners of interests in the development is at the pleasure of the owners of the facilities. The Ranch House Grill is currently open to the public. All photos/pictorials are artist's conception. Information is subject to change without notice. This shall not constitute an offer in any state where registration is required or if in violation of law. Effective date 7/8/25. © 2025 Robson Communities®, Inc. All rights reserved.



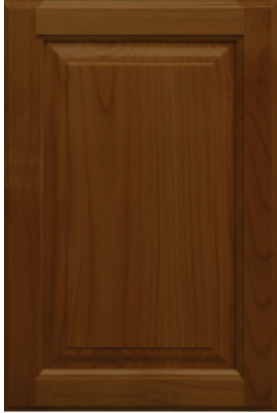


Opt. 3' Primary Bath, W.I.C., Den Extension With Golf Cart Garage

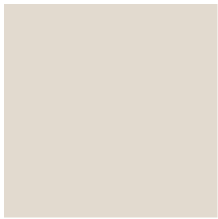
- Standard Livable Space
- Optional Livable Space
- Standard Concrete Areas
- Optional Concrete Areas



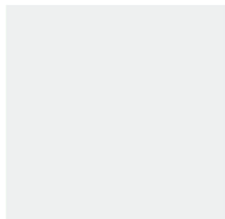
Cabinets
*Hampton
Clear Alder
Cognac*



Interior Paint



Egret White
Walls SW7570



Extra White Trim
SW7006



Entry Door
4-Panel 2-Lite Woodgrain
**Painted per Exterior Color Scheme*



Continental Interior Doors
2 Panel Smooth
**Painted to Match Trim*

Signature Slide-In Gas Package Stainless - AA242



30" Convection Gas Range
UPSG3014ST



Over-the-Range Convection Microwave Oven
UPMC3084ST



Top Control Dishwasher
SKSDW2411S

*Colors may vary from shown.
Subject to change.*