






MOVE-IN READY HOME

\$712,292

61568 E Travertine St Oracle, AZ 85623



TESORO • UNIT: 18B/LOT: 7 • EST. COMPLETION: JULY 2026

	2,439 sq. ft.		2 Beds
	2.5 Baths		Den
	3-Car		

**SALE PRICE:
\$712,292**

CONSTRUCTION & UTILITIES

Unit Style: One Level
Cooling: Refrigeration
Heating: Gas
Construction: Frame/stucco

HOME UPGRADES & FEATURES

Kitchen:

LG built-in gas stainless steel package includes:
Convection wall oven, cooktop, microwave and dishwasher
LG stainless steel French door refrigerator w/external dispenser, dual ice maker
Solid Madison Clear Alder cabinets w/42" uppers
Full height tile backsplash
Quartz countertops
2" Shaker crown moulding. (kitchen only)

Additional Upgrades:

5" Contemporary baseboards
Sterling Latitude 995 Vikrell Laundry Sink in white
3rd Car Garage
Extended walk-in closet at Primary bedroom
Upgraded carpet and wood/luxury vinyl plank flooring
Vanity light fixtures in all baths

Bathrooms:

Drop in tub at Primary Bath
Heavy glass semi-frameless shower enclosure at Primary
Quartz vanities and tile surrounds in Primary bath and bath 2
Upgraded Delta plumbing fixtures and coordinating Delta bath accessories in Chrome
Pedestal sink in Powder room

HOA Fees: \$3,446.32 per year. Includes access to SaddleBrooke Ranch amenities including fitness facilities, pickleball courts, pools and more!

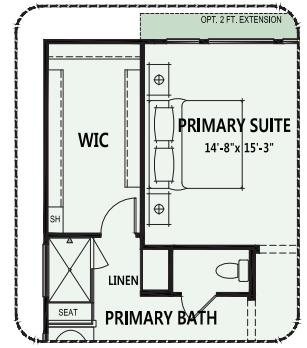
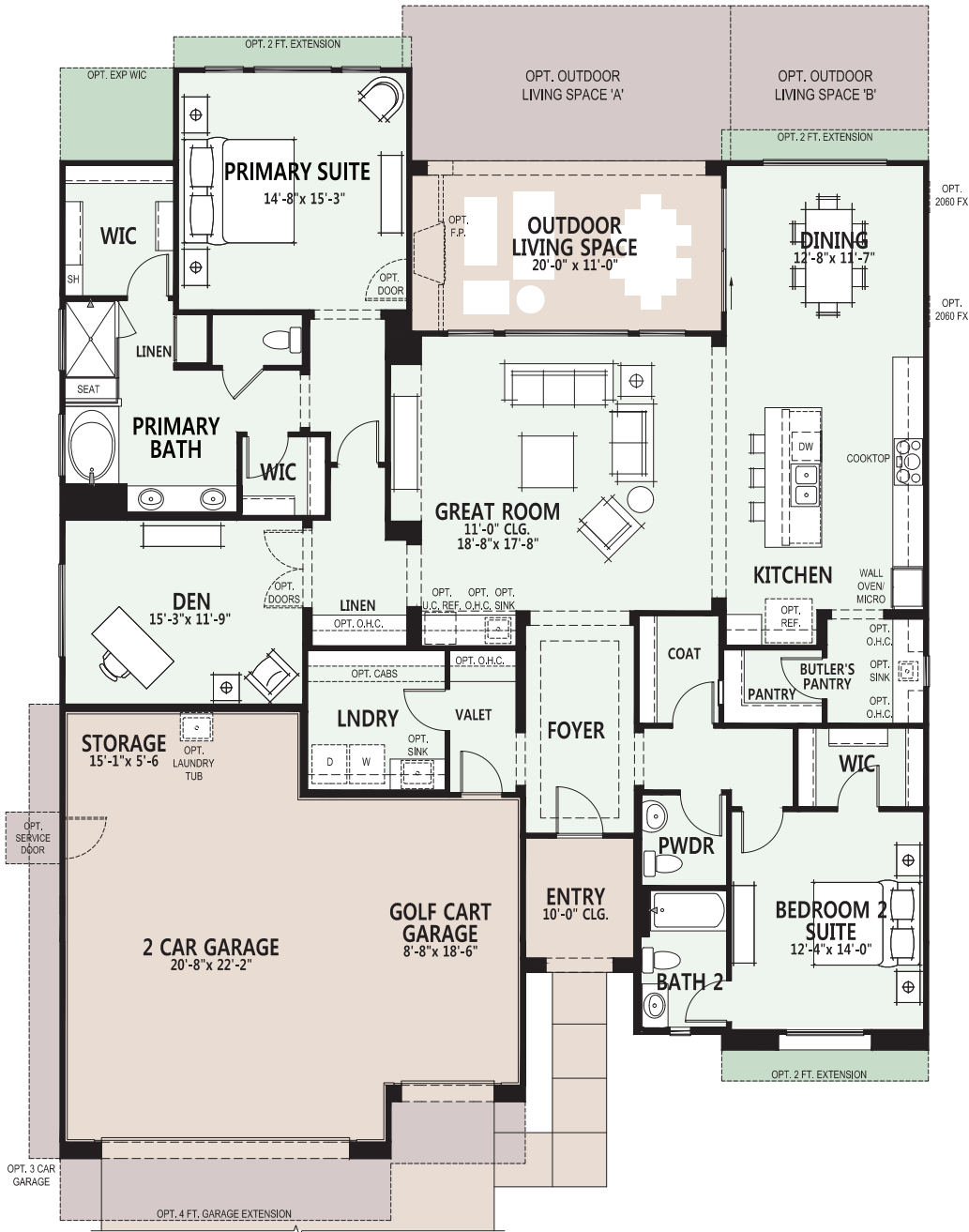


59680 East Robson Circle, Oracle, AZ 85623
Model Village Open Daily 9am - 6pm

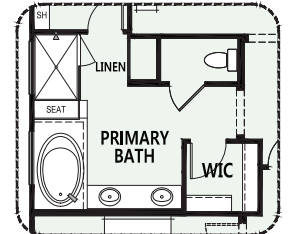
CALL FOR INFORMATION
520.818.6000
866.818.6068

We reserve the right to discontinue or change specifications at any time. Promotional materials may show features, options, upgrades or improvements that are only available at an additional cost and that are not included unless specifically provided for in the purchase contract. All dimensions and measurements, including without limitation square footages, ceiling heights and window sizes, styles and locations, are approximate and may vary per elevation and floor plan. Measurements in model homes may vary slightly without incurring any obligation or liability. Lot size is approximate and is typical for that home series within the community. Actual lot sizes and home measurements will vary. Lot size and actual position of the home on the lot will be determined by the site plan and final plot plan based upon the particular home and lot selected. Interior and/or exterior photos or illustrations of models may have been taken at other Robson Resort Communities®, are artist's conceptions and are not intended to show specific detail for homes at any particular Robson Resort Community™. Many options are available and will vary per floor plan. Check with your New Home Consultant. The housing at any Robson Resort Community™ is intended for occupancy by at least one person 55 years of age or older per dwelling unit, although the occupants of a limited number of dwelling units may be younger. One person must be at least 40 years old in each unit. No one in permanent residence under 19 years of age. Homes are offered and sold by SaddleBrooke Development Company, broker for Robson Ranch Mountains, LLC, owner. Robson Ranch Arizona Construction Company, general contractor, ROC 192584. No offer for sale or lease may be made or accepted prior to buyer's receipt of an Arizona subdivision public report. A public report is available on the Arizona state real estate department's website. There are additional fees (not included in the HOA fees) for using some of the recreational facilities. The golf course, pro shop and practice facility are open to the public and will be owned by the developer or its assignees. Availability of these facilities for use by owners of interests in the development is at the pleasure of the owners of the facilities. The Ranch House Grill is currently open to the public. All photos/pictorials are artist's conception. Information is subject to change without notice. This shall not constitute an offer in any state where registration is required or in violation of law. Effective date 4/1/26. © 2026 Robson Communities®, Inc. All rights reserved.

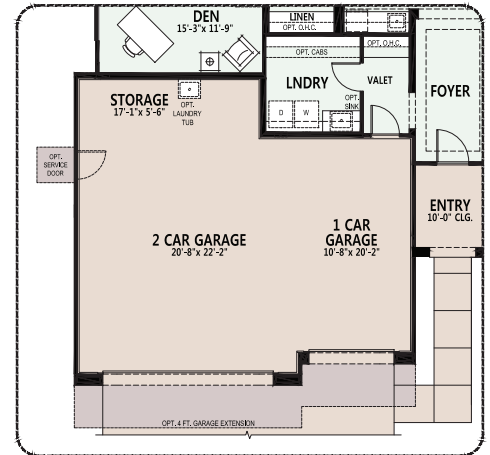




Opt. Expanded WIC

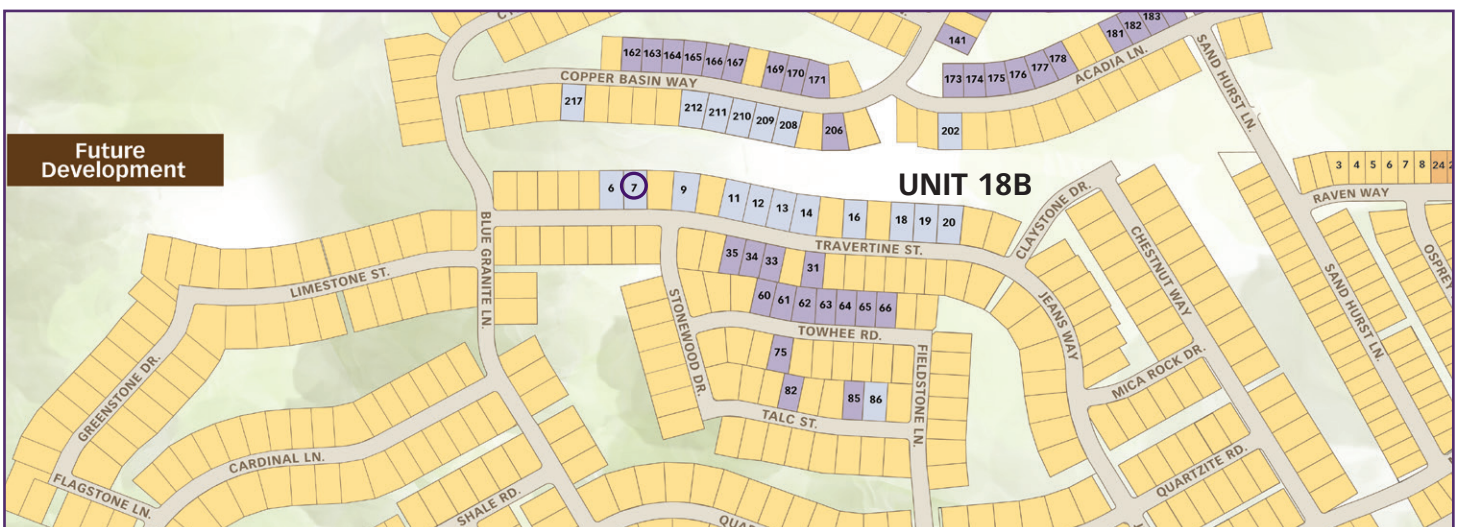


Opt. Drop-in Tub

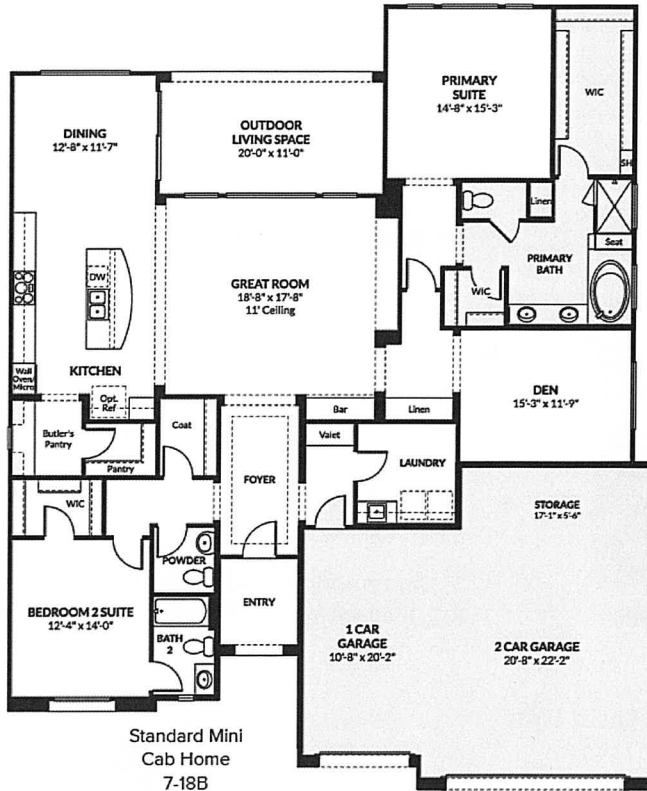


Opt. 3 Car Garage

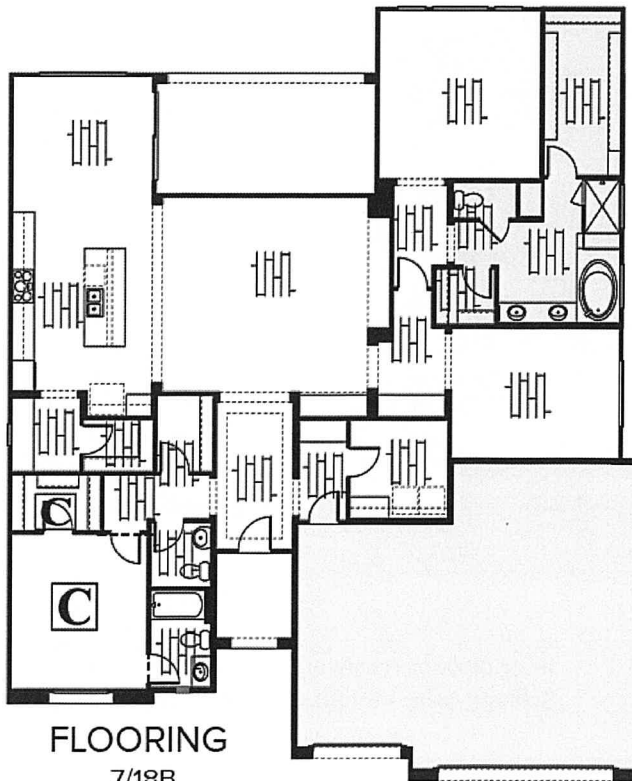
- Standard Livable Space
- Optional Livable Space
- Standard Concrete Areas
- Optional Concrete Areas



SaddleBrooke Ranch
 Designer/Move-in Ready Home
 Lot: 7 Unit: 18B 2395 Tesoro

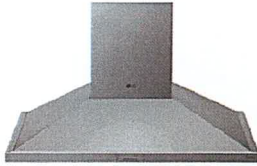


Standard Mini
 Cab Home
 7-18B



FLOORING
 7/18B
 Designer Home

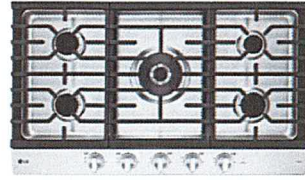
LG Built-in Gas Appliance
Package-Stainless



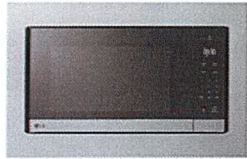
Chimney Hood
HCED3615S*



Single Convection Wall Oven
WSEP4723F



36" Gas Cooktop
CBGJ3627S



Microwave Oven & Trim Kit
MSER2090S/MK2030NST



Top Control Dishwasher
LDTH5554S

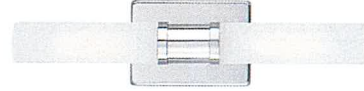
LG French Door
Refrigerator
Center-Depth-Stainless



Builder reserves the right to alter any products or design without prior notice. Product substitutions will be made, as needed, to meet construction schedules. Photos are intended to be inspiration photos and are not intended to be exact depictions of color, floorplans, or selections.

Powder Room

Light Bar: Visual Comfort Keaton 20" - Chrome



Sink: Sterling Sacramento Pedestal sink

Faucet: Delta Saylor 8" Widespread - Chrome
(w/ matching accessories)

Floor LVP: Shaw 012CT Domain #00771 Aurora Oak



Builder reserves the right to alter any products or design without prior notice. Product substitutions will be made, as needed, to meet construction schedules. Photos are intended to be inspiration photos and are not intended to be exact depictions of color, floorplans, or selections.

Bath 2

Light Bar: Visual Comfort Keaton 20" - Chrome

Cabinets: Madison Alder Fawn

Cabinet Hardware: Sutton 635-128 Polished Chrome

Countertop: AZT Denali-N 3CM Eased & Polished Edge

Faucet: Delta Saylor 8" widespread- Chrome
(w/ matching accessories)

Tub/Shower Surround:

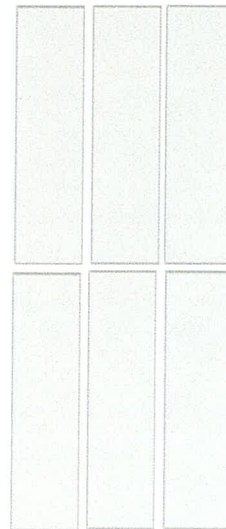
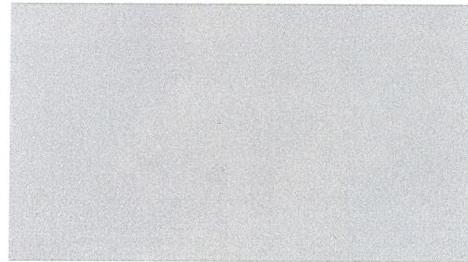
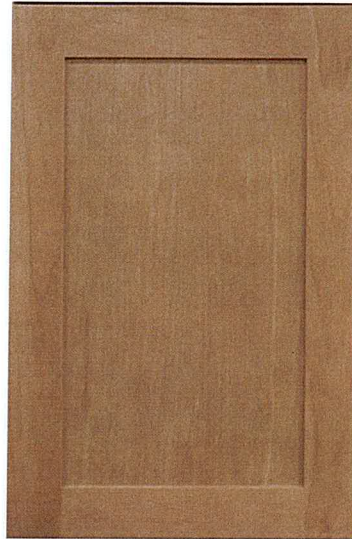
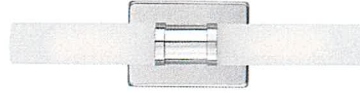
AZT Paloma Cotton Matte 4x16

**Installed Vertical Stacked*

Grout: Custom #640 Arctic White

Schluter Trim: White

Floor LVP: Shaw 012CT Domain #00771 Aurora Oak



Builder reserves the right to alter any products or design without prior notice. Product substitutions will be made, as needed, to meet construction schedules. Photos are intended to be inspiration photos and are not intended to be exact depictions of color, floorplans, or selections.