






MOVE-IN READY HOME

\$469,900

3218 N 169th Ln, Goodyear AZ 85395



NAPA • UNIT: 49B/LOT: 66 • AVAILABLE NOW

 1,724 sq. ft.	 2 Beds
 2.5 Baths	 Den
 2-Car	

PRICE: \$576,602
INCENTIVE: - \$106,702
SALE PRICE: \$469,900

CONSTRUCTION & UTILITIES

Unit Style: Villa
Cooling: Refrigeration
Heating: Gas
Construction: Frame/Stucco

HOME UPGRADES & FEATURES

Kitchen:

Madison Perfect Brown cabinets
Dove-tail drawers / soft-close
Built in LG Signature gas / stainless steel appliances
Delta Emmeline pull-down Kitchen faucet - chrome
Kohler Vault Single Bowl sink - stainless steel
Trash bin cabinet
Upgraded full height tile backsplash
Eased Edge Quartz countertops

Laundry Room:

Sterling Latitude laundry sink
Eased Edge Quartz countertops
Delta Foundations pull-out faucet - chrome

Bathrooms:

ProFlo elongated Comfort Height toilets
Delta Altado faucets - chrome
Delta Altado accessories - chrome
Upgrade tile surrounds and deco bands
Eased Edge Quartz countertops
Madison HDF Frost & Dew Matte cabinets

Additional Upgrades:

Gas BBQ stub at back
Aterra electrical / home technology / media
Upgraded LVP & Carpet flooring

HOA Fees: \$3,522 per year. Includes access to PebbleCreek amenities including fitness facilities, pools, creative arts building, tennis courts and more!
PebbleCreek Villas Unit 49: Additional \$225 per month covers maintenance of landscaping, maintenance of exterior of home and blanket insurance policy

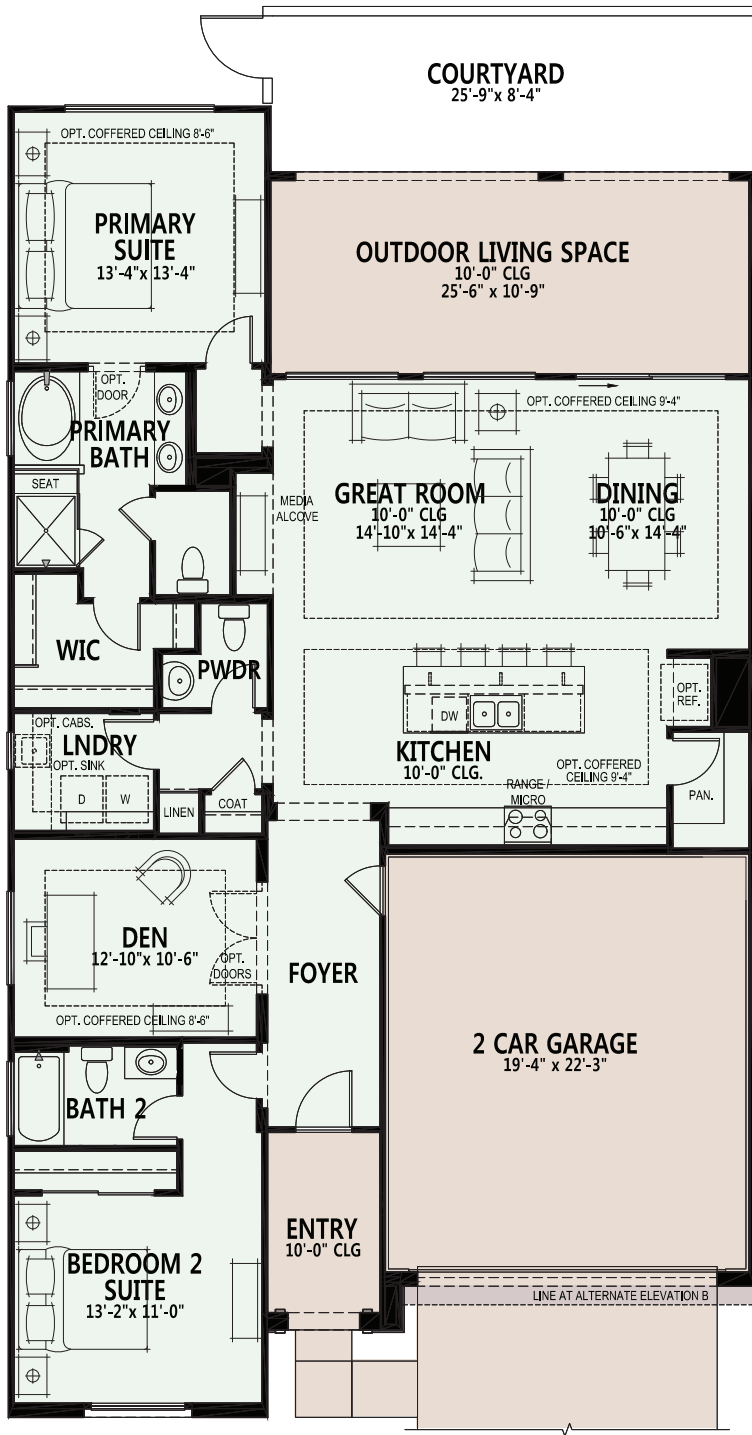


3003 N 164th Ave, Goodyear AZ 85395
Model Village Open Daily 9am - 6pm

CALL FOR INFORMATION
623.935.6700
800.795.4663

Please review the CC&R's for the Villas regarding details for home exterior, landscaping & common areas maintenance. All information is subject to change without notice. We reserve the right to discontinue or change specifications at any time. Promotional materials may show features, options, upgrades or improvements that are only available at an additional cost and that are not included unless specifically provided for in the purchase contract. All dimensions and measurements, including without limitation square footages, ceiling heights and window sizes, styles and locations, are approximate and may vary per elevation and floor plan. Measurements in model homes may vary slightly without incurring any obligation or liability. Lot size is approximate and is typical for that home series within the community. Actual lot sizes and home measurements will vary. Lot size and actual position of the home on the lot will be determined by the site plan and final plot plan based upon the particular home and lot selected. Interior and/or exterior photos or illustrations of models may have been taken at other Robson Resort Communities®, are artist's conceptions and are not intended to show specific detail for homes at any particular Robson Resort Community™. Many options are available and will vary per floor plan. Check with your New Home Consultant. The housing at any Robson Resort Community™ is intended for occupancy by at least one person 55 years of age or older per dwelling unit, although the occupants of a limited number of dwelling units may be younger. One person must be at least 40 years of age in each unit. No one in permanent residence under 19 years of age. Homes are offered and sold by PebbleCreek Properties Limited Partnership, owner/agent. PebbleCreek Construction Company, general contractor, ROC 190149. No offer for sale or lease may be made or accepted prior to buyer's receipt of an Arizona subdivision public report. A public report is available on the Arizona state real estate department's website. There are additional fees (not included in the HOA fees) for using some of the recreational facilities. All photos/pictorials are artist's conception. This material shall not constitute an offer in any state where registration is required or if in violation of law. Effective date 5/5/26. © 2026 Robson Communities®, Inc. All rights reserved.





- Standard Livable Space
- Standard Concrete Areas

