






MOVE-IN READY HOME

\$474,020

5728 N Maverick Dr., Eloy, AZ 85131



ENCHANTMENT • UNIT: 20E/LOT: 26 • EST. COMPLETION: MARCH 2026

 2,459 sq. ft.	 3 Beds
 3.5 Baths	 Den
 2-Car	

**SALE PRICE**  
**\$474,020**

**CONSTRUCTION & UTILITIES**

**Unit Style:** One Level  
**Cooling:** Refrigeration  
**Heating:** Gas  
**Construction:** Frame/stucco

**HOME UPGRADES & FEATURES**

**Kitchen:**

Charleston - Arctic White Cabinets with 41" Uppers - Arctic White  
Quartz-Concrete Grey Honed Countertops  
Full Height Tile Backsplash  
Kohler Vault, - Single Bowl undermount sink w/rack  
Delta Trinsic Single Pull-Down Faucet - Chrome  
LG Stainless Steel Gas Appliance Package  
Includes Cooktop, Dishwasher, Wall Oven and Microwave

**Outdoor Living:**

Large Covered outdoor Living Space - 264 sq ft

**Additional Upgrades:**

Opt Bedroom 3 Suite In Lieu of Loft  
Designer Carpet and Tile  
Two-Tone Interior Paint  
Wood/LVP -Shawn Doman, Tile  
5-1/4" Baseboards

**Bathrooms:**

Quartz Counter Tops at Primary Bath and Bath 2  
Standard Title Surround at Primary Bath  
Delta Altado Fixtures - Chrome  
ProFlo High-efficiency Comfort  
3/8" Clear Glass Semi-Frameless Shower Enclosure  
Framed Mirrors Primary Bath

**HOA Fees:** \$3,473.12 per year. Includes access to Robson Ranch amenities including fitness facilities, resort pools, creative arts, tennis courts and more!



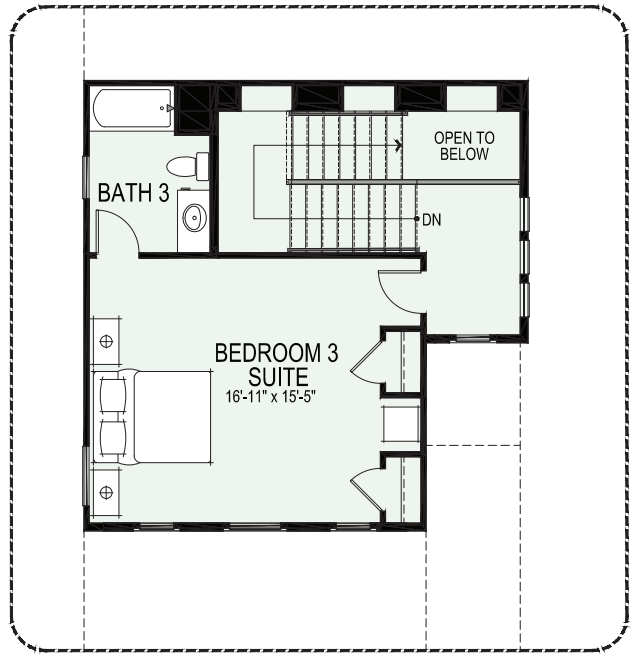
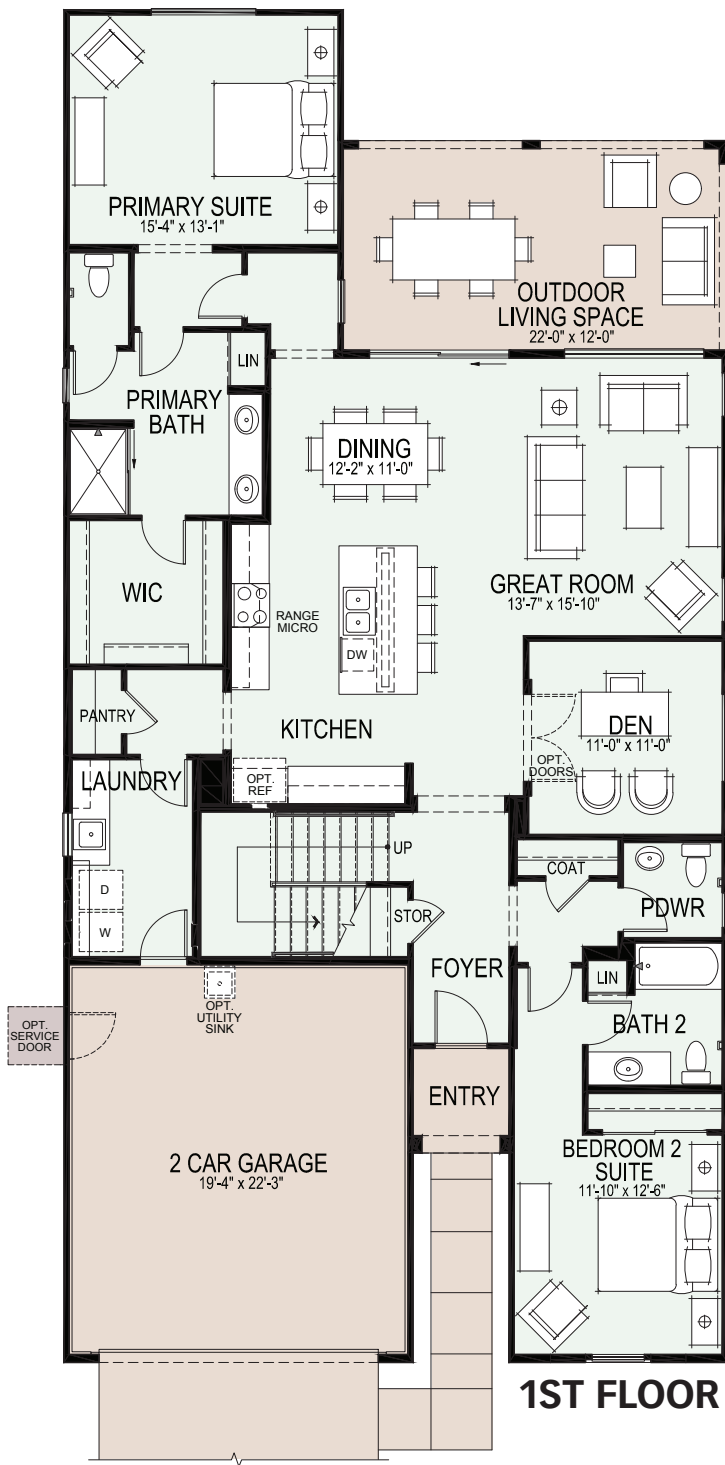
5687 N. Robson Blvd. Eloy, AZ 85131  
Model Village Open Daily 9am - 6pm

CALL FOR INFORMATION  
520.426.3300  
800.770.7044

All information is subject to change without notice. We reserve the right to discontinue or change specifications at any time. Promotional materials may show features, options, upgrades or improvements that are only available at an additional cost and that are not included unless specifically provided for in the purchase contract. All dimensions and measurements, including without limitation square footages, ceiling heights and window sizes, styles and locations, are approximate and may vary per elevation and floor plan. Measurements in model homes may vary slightly without incurring any obligation or liability. Interior and/or exterior photos or illustrations of models may have been taken at other Robson Resort Communities®, are artist's conceptions and are not intended to show specific detail for homes at any particular Robson Resort Community™. Many options are available and will vary per floor plan. Check with your New Home Consultant. The housing at any Robson Resort Community is intended for occupancy by at least one person 55 years of age or older per unit, although the occupants of a limited number of the dwelling units may be younger. One person must be at least 40 years old in each unit. No one in permanent residence under 19 years of age. Homes are offered and sold by Sun Lakes-Casa Grande Development, LLC, owner/agent. Robson Ranch Arizona Construction Company, general contractor, ROC 192584. Some amenities not included in community service fees. All photos/pictorials are artist's conception. No offer for sale or lease may be made or accepted prior to buyer's receipt of an Arizona subdivision public report. A public report is available on the Arizona state real estate department's website. There are additional fees (not included in the HOA fees) for using some of the recreational facilities. All photos/pictorials are artist's conception. This material shall not constitute an offer in any state where registration is required or if in violation of law. Effective date 2/26/26.

© 2026 Robson Communities®, Inc. All rights reserved.





**Opt Bedroom 3 Suite In Lieu of Loft 2ND FLOOR**

- Standard Livable Space
- Standard Concrete Areas





*Cabinet Style  
Charleston*



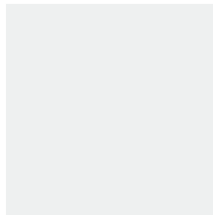
*Cabinet Color  
Arctic White*



*Belleville Entry Door  
2 Panel 1/2-Lite Textured  
\*Painted per Exterior Color Scheme*



*Cambridge Interior Doors  
2 Panel Square Smooth  
\*Painted to Match Trim*



*Extra White Interior Paint  
SW7006*

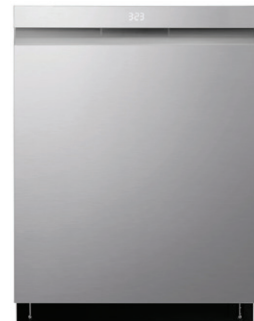
*LG Slide-In Gas Package Stainless - AA222*



*30" Convection Gas Range  
LSGL6335F*



*Over-the-Range Microwave Oven  
MVEL2033F*



*Top Control Dishwasher  
LDPH7972S*

*Colors may vary from shown.  
Subject to change.*