

DESIGNER HOME






\$828,975*

16709 W Whitton Av, Goodyear AZ 85395



Elevation C Rendering

VIENTA • UNIT: 47B/LOT: 68 • EST. COMPLETION: NOVEMBER 2026

-  2,308 sq. ft.
-  2 Beds
-  2.5 Baths
-  Den
-  3-Car Garage

SALE PRICE
\$828,975*

**Price includes pre-selected options and your choices from the base-level selections.*

CONSTRUCTION & UTILITIES

- Unit Style:** One Level
- Cooling:** Refrigeration
- Heating:** Gas
- Construction:** Modified BASF HP+ Wall System

PERSONALIZE YOUR DESIGNER HOME: FINISH YOUR HOME, YOUR WAY!

Make your home uniquely yours by selecting final touches that reflect your style. Choose from a curated selection of stylish, included options at no extra cost, or explore premium upgrades for an additional price. **The finishing touch is all yours!**

Design Selections:

- Countertops, tile flooring, carpet, and entry door hardware — available in stylish choices, all included in the base price. Want more options? Explore upgrades for even greater personalization.
- Pre-selected faucets and sinks, bath accessories, and bath surrounds are included. Prefer a different look? Optional upgrades are available.

Connect with your new home sales consultant for further details!

Home Upgrades:

- Upgraded 42" cabinets w/ dovetail soft close drawers
- LG built-in gas stainless steel appliance package
- Sterling Latitude Vikrell laundry sink
- Full laundry room cabinets

Enhance Your Home Even Further With These Optional Upgrades:

- Refrigerator
- Washer/Dryer
- Cabinet hardware
- Garage epoxy
- Upgraded shower enclosure
- Assist bars
- Framed mirrors
- Garage cabinets

HOA Fees: \$3,522 per year. Includes access to PebbleCreek amenities including fitness facilities, pools, creative arts building, tennis courts and more!

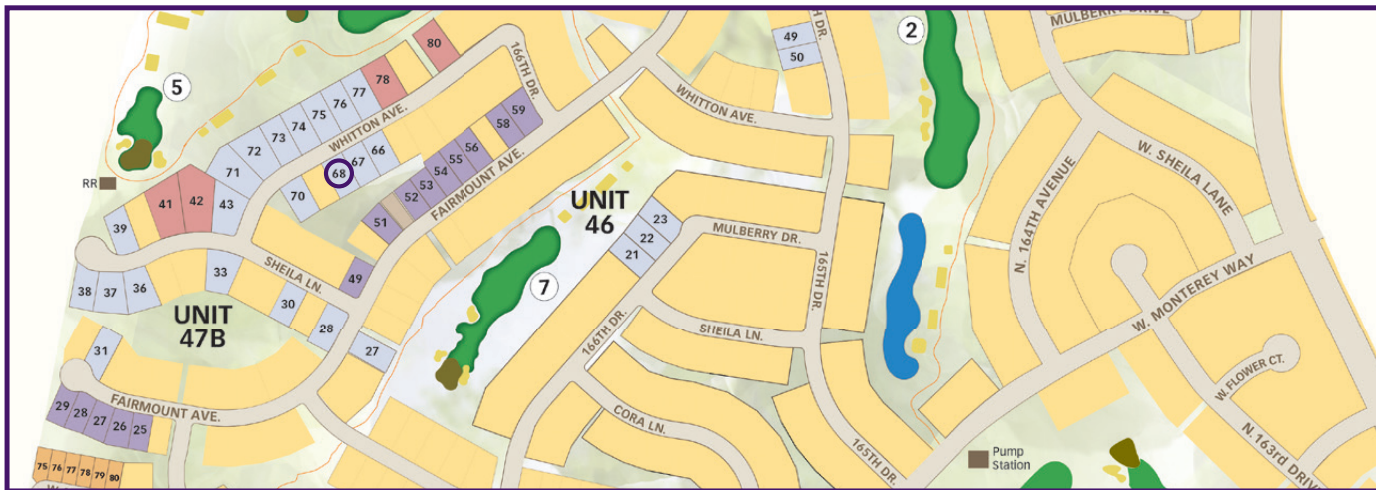
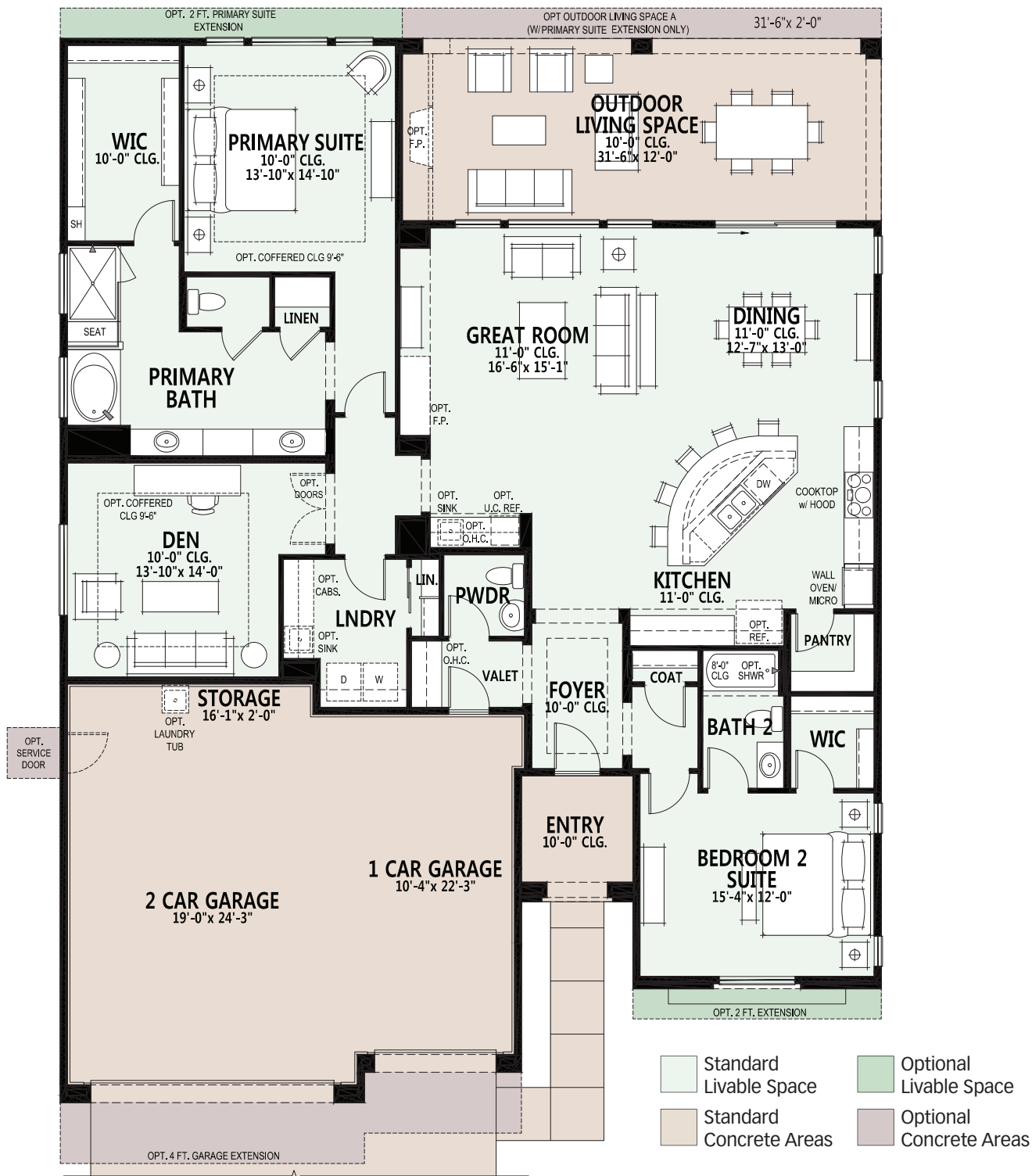


3003 N 164th Ave, Goodyear AZ 85395
Model Village Open Daily 9am - 6pm

CALL FOR INFORMATION
623.935.6700
800.795.4663

All information is subject to change without notice. We reserve the right to discontinue or change specifications at any time. Promotional materials may show features, options, upgrades or improvements that are only available at an additional cost and that are not included unless specifically provided for in the purchase contract. All dimensions and measurements, including without limitation square footages, ceiling heights and window sizes, styles and locations, are approximate and may vary per elevation and floor plan. Measurements in model homes may vary slightly without incurring any obligation or liability. Lot size is approximate and is typical for that home series within the community. Actual lot sizes and home measurements will vary. Lot size and actual position of the home on the lot will be determined by the site plan and final plot plan based upon the particular home and lot selected. Interior and/or exterior photos or illustrations of models may have been taken at other Robson Resort Communities®. All photos/pictorials are artist's conception. This material shall not constitute an offer in any state where registration is required or if in violation of law. Effective date 6/15/26. © 2026 Robson Communities®, Inc. All rights reserved.





CABINET DESIGNER HOME

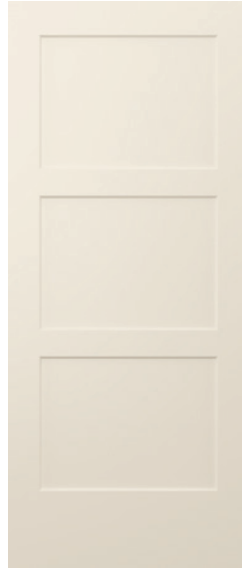
Vienta 23133 Unit: 47B Lot: 68



*Cabinetry: Laguna II
Paint Grade HDF Frost*



*Cabinet Color Change
at Primary Bath:
Laguna II Dew Matte*

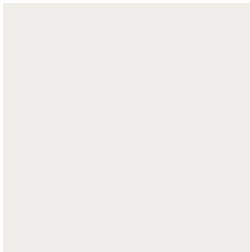


*Birkdale Interior Doors
3 Panel Smooth
*Painted Pure White**

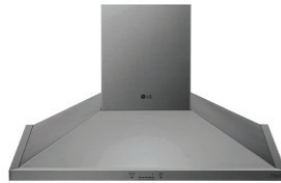


*Belleville 3-lite Entry Door
Chord Glass
Painted per Exterior Color Scheme

LG Built-in Gas Appliance Package AA261



*Interior Paint
SW7005 Pure White*



*Chimney Hood
HCED3615S**



*Single Convection Wall Oven
WSEP4723F*



*36" Gas Cooktop
CBGJ3627S*



*5" Contemporary Baseboards
& 2 1/4" Casing*



*Microwave Oven & Trim Kit
MSER2090S/MK2030NST*



*Top Control Dishwasher
LDTH5554S*